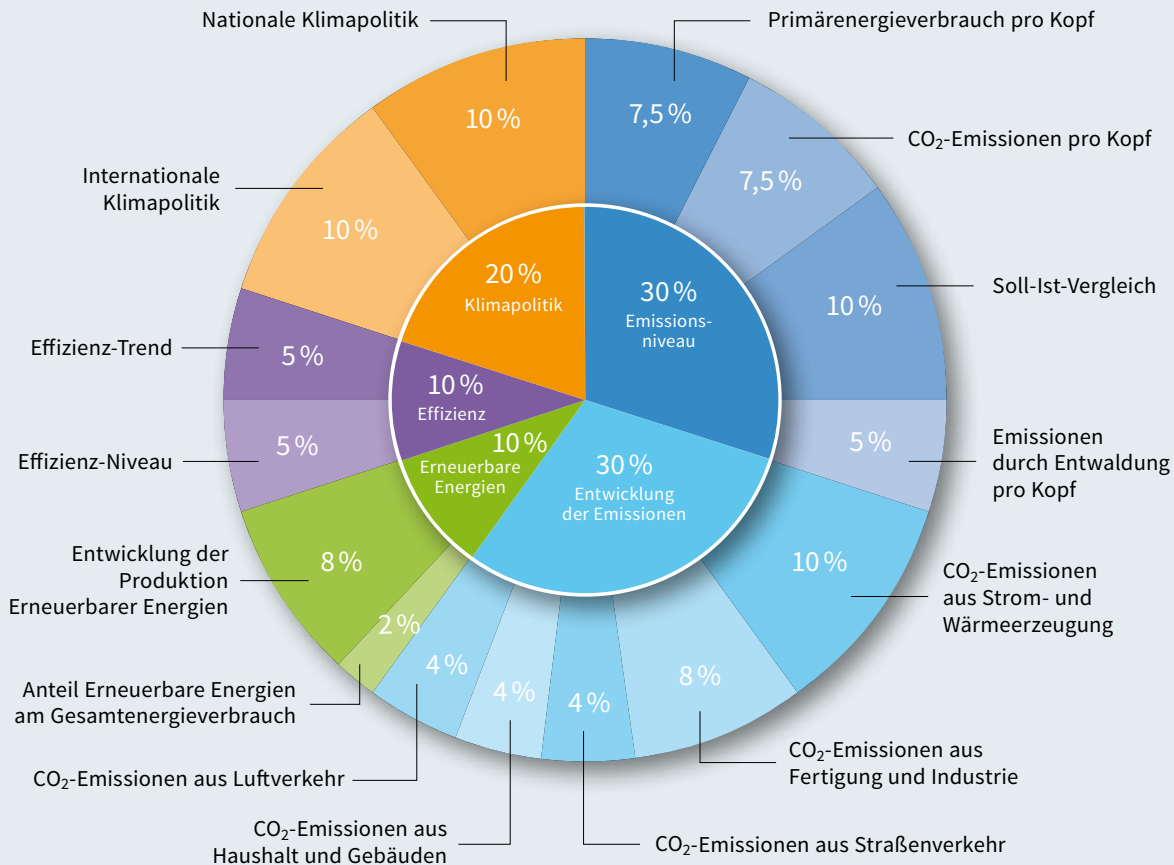


Komponenten des Klimaschutz-Index



Klimaschutz-Index 2017 • Gesamtergebnis



| Rang | Land | Punkte** | |
|------|---------------------|----------|--|
| 1* | | | |
| 2 | | | |
| 3 | | | |
| 4 | ▲ Frankreich | 66,17 | <div><div></div><div></div><div></div><div></div><div></div></div> |
| 5 | ▲ Schweden | 66,15 | <div><div></div><div></div><div></div><div></div><div></div></div> |
| 6 | ▼ Großbritannien | 66,10 | <div><div></div><div></div><div></div><div></div><div></div></div> |
| 7 | ▲ Zypern | 64,28 | <div><div></div><div></div><div></div><div></div><div></div></div> |
| 8 | ▲ Marokko | 63,28 | <div><div></div><div></div><div></div><div></div><div></div></div> |
| 9 | ▲ Luxemburg | 62,86 | <div><div></div><div></div><div></div><div></div><div></div></div> |
| 10 | ▲ Malta | 62,51 | <div><div></div><div></div><div></div><div></div><div></div></div> |
| 11 | ▲ Portugal | 62,47 | <div><div></div><div></div><div></div><div></div><div></div></div> |
| 12 | ▼ Belgien | 62,08 | <div><div></div><div></div><div></div><div></div><div></div></div> |
| 13 | ▼ Dänemark | 61,87 | <div><div></div><div></div><div></div><div></div><div></div></div> |
| 14 | ▲ Schweiz | 61,66 | <div><div></div><div></div><div></div><div></div><div></div></div> |
| 15 | ▼ Lettland | 61,20 | <div><div></div><div></div><div></div><div></div><div></div></div> |
| 16 | ▲ Italien | 60,72 | <div><div></div><div></div><div></div><div></div><div></div></div> |
| 17 | ▲ Kroatien | 60,66 | <div><div></div><div></div><div></div><div></div><div></div></div> |
| 18 | ▼ Rumänien | 60,33 | <div><div></div><div></div><div></div><div></div><div></div></div> |
| 19 | ▲ Litauen | 59,75 | <div><div></div><div></div><div></div><div></div><div></div></div> |
| 20 | ▲ Indien | 59,08 | <div><div></div><div></div><div></div><div></div><div></div></div> |
| 21 | ▼ Irland | 59,02 | <div><div></div><div></div><div></div><div></div><div></div></div> |
| 22 | ▼ Indonesien | 58,86 | <div><div></div><div></div><div></div><div></div><div></div></div> |
| 23 | ▼ Ägypten | 58,75 | <div><div></div><div></div><div></div><div></div><div></div></div> |
| 24 | ▲ Tschechische Rep. | 58,52 | <div><div></div><div></div><div></div><div></div><div></div></div> |
| 25 | ▲ Griechenland | 58,29 | <div><div></div><div></div><div></div><div></div><div></div></div> |
| 26 | ▼ Slowakei | 57,69 | <div><div></div><div></div><div></div><div></div><div></div></div> |
| 27 | ▲ Niederlande | 57,10 | <div><div></div><div></div><div></div><div></div><div></div></div> |
| 28 | ▼ Mexiko | 57,02 | <div><div></div><div></div><div></div><div></div><div></div></div> |
| 29 | ▼ Deutschland | 56,58 | <div><div></div><div></div><div></div><div></div><div></div></div> |
| 30 | ▲ Slowenien | 56,55 | <div><div></div><div></div><div></div><div></div><div></div></div> |
| 31 | ▼ Finnland | 56,28 | <div><div></div><div></div><div></div><div></div><div></div></div> |

| Rang | Land | Punkte** | |
|------|-----------------|----------|--|
| 32 | ▲ Südafrika | 56,17 | <div><div></div><div></div><div></div><div></div><div></div></div> |
| 33 | ▼ Spanien | 56,14 | <div><div></div><div></div><div></div><div></div><div></div></div> |
| 34 | ▼ Ungarn | 55,05 | <div><div></div><div></div><div></div><div></div><div></div></div> |
| 35 | ▼ Polen | 53,68 | <div><div></div><div></div><div></div><div></div><div></div></div> |
| 36 | ▲ Argentinien | 53,15 | <div><div></div><div></div><div></div><div></div><div></div></div> |
| 37 | ▲ Bulgarien | 53,06 | <div><div></div><div></div><div></div><div></div><div></div></div> |
| 38 | ▼ Norwegen | 52,90 | <div><div></div><div></div><div></div><div></div><div></div></div> |
| 39 | ▼ Island | 52,55 | <div><div></div><div></div><div></div><div></div><div></div></div> |
| 40 | ▲ Brasilien | 52,46 | <div><div></div><div></div><div></div><div></div><div></div></div> |
| 41 | ▲ Österreich | 52,00 | <div><div></div><div></div><div></div><div></div><div></div></div> |
| 42 | ▲ Thailand | 51,91 | <div><div></div><div></div><div></div><div></div><div></div></div> |
| 43 | ▼ USA | 51,04 | <div><div></div><div></div><div></div><div></div><div></div></div> |
| 44 | ▼ Malaysia | 50,96 | <div><div></div><div></div><div></div><div></div><div></div></div> |
| 45 | ▲ Ukraine | 50,88 | <div><div></div><div></div><div></div><div></div><div></div></div> |
| 46 | ▼ Neuseeland | 50,48 | <div><div></div><div></div><div></div><div></div><div></div></div> |
| 47 | ▼ Algerien | 48,46 | <div><div></div><div></div><div></div><div></div><div></div></div> |
| 48 | - China | 47,49 | <div><div></div><div></div><div></div><div></div><div></div></div> |
| 49 | ▼ Weißrussland | 46,86 | <div><div></div><div></div><div></div><div></div><div></div></div> |
| 50 | - Estland | 46,04 | <div><div></div><div></div><div></div><div></div><div></div></div> |
| 51 | - Türkei | 45,54 | <div><div></div><div></div><div></div><div></div><div></div></div> |
| 52 | - Taiwan | 44,76 | <div><div></div><div></div><div></div><div></div><div></div></div> |
| 53 | - Russland | 44,30 | <div><div></div><div></div><div></div><div></div><div></div></div> |
| 54 | - Singapur | 43,97 | <div><div></div><div></div><div></div><div></div><div></div></div> |
| 55 | ▲ Kanada | 43,06 | <div><div></div><div></div><div></div><div></div><div></div></div> |
| 56 | ▼ Iran | 43,05 | <div><div></div><div></div><div></div><div></div><div></div></div> |
| 57 | - Australien | 40,66 | <div><div></div><div></div><div></div><div></div><div></div></div> |
| 58 | ▲ Südkorea | 38,11 | <div><div></div><div></div><div></div><div></div><div></div></div> |
| 59 | ▲ Kasachstan | 36,87 | <div><div></div><div></div><div></div><div></div><div></div></div> |
| 60 | ▼ Japan | 35,93 | <div><div></div><div></div><div></div><div></div><div></div></div> |
| 61 | - Saudi-Arabien | 25,45 | <div><div></div><div></div><div></div><div></div><div></div></div> |

Sektoren

- Emissionsniveau
(30 % Gewichtung)
- Entwicklung
der Emissionen
(30 % Gewichtung)
- Erneuerbare
Energien
(10 % Gewichtung)
- Effizienz
(10 % Gewichtung)
- Klimapolitik
(20 % Gewichtung)

Bewertung

- Sehr gut
- Gut
- Mäßig
- Schlecht
- Sehr schlecht

Veränderung zum Vorjahr

© Germanwatch 2016

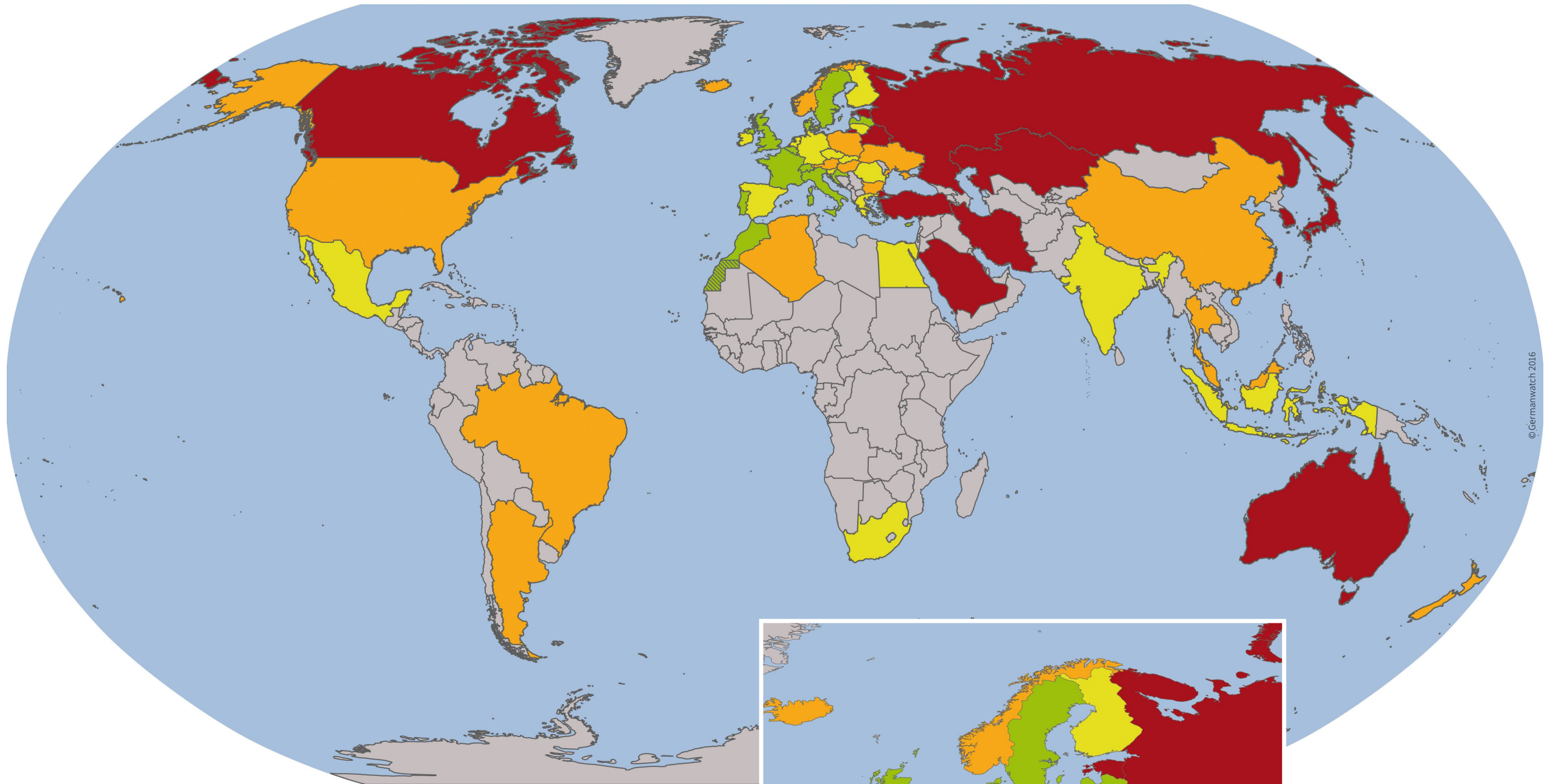
* Kein Land erreicht den ersten bis dritten Platz, da kein Land genug unternimmt, um einen gefährlichen Klimawandel zu vermeiden.

** gerundet

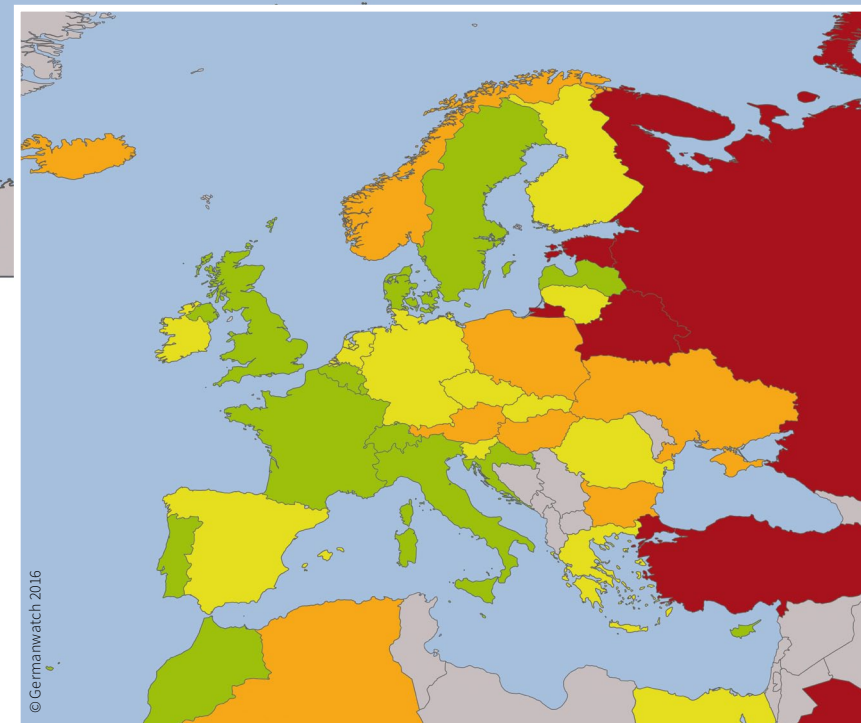
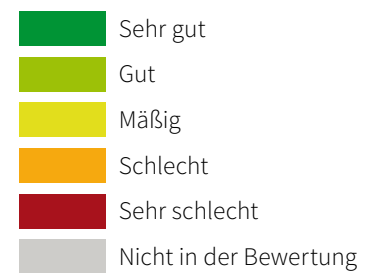
Veränderung zum Vorjahr

© Germanwatch 2016

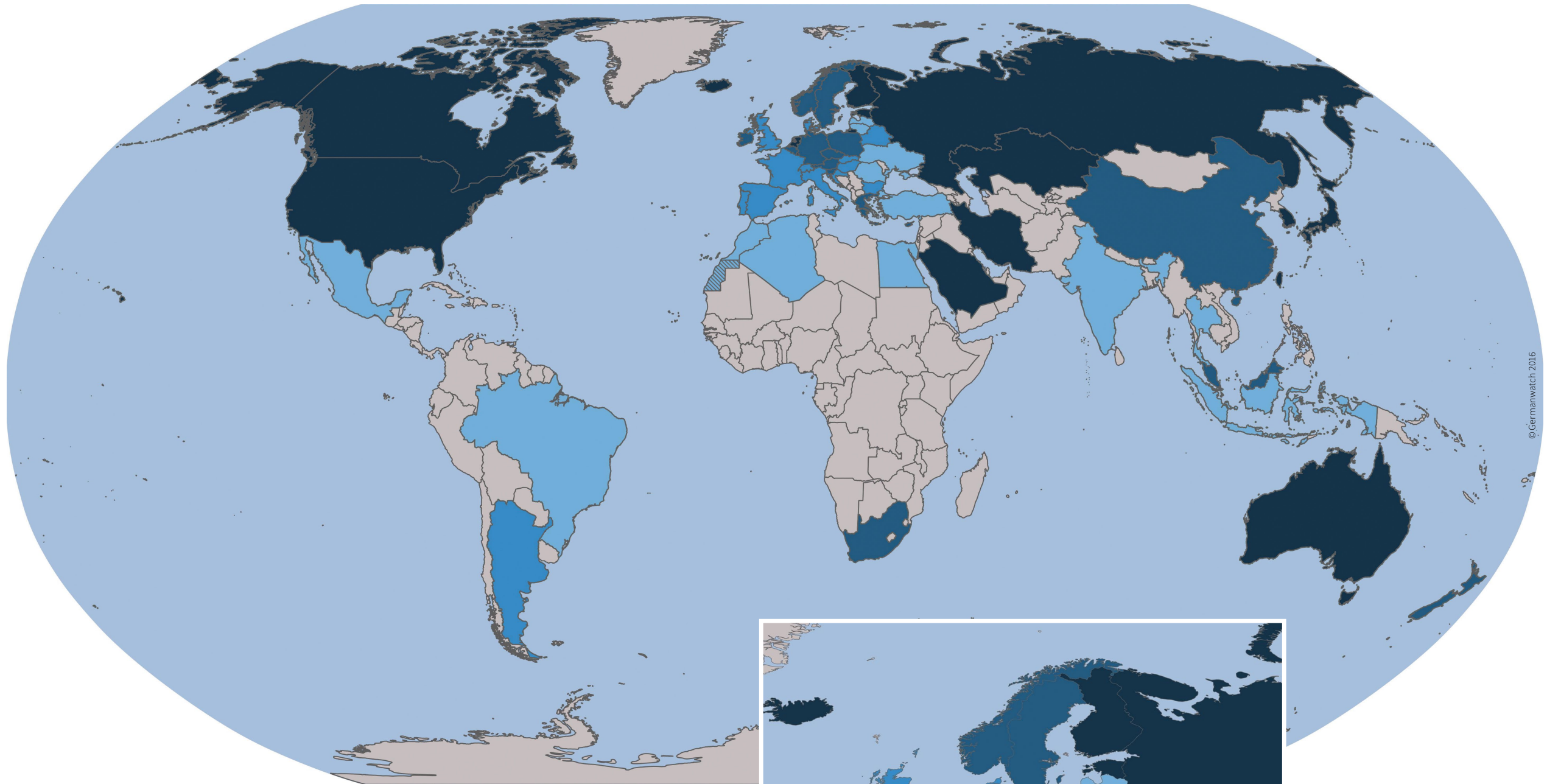
Klimaschutz-Index 2017 • Gesamtergebnis Weltkarte



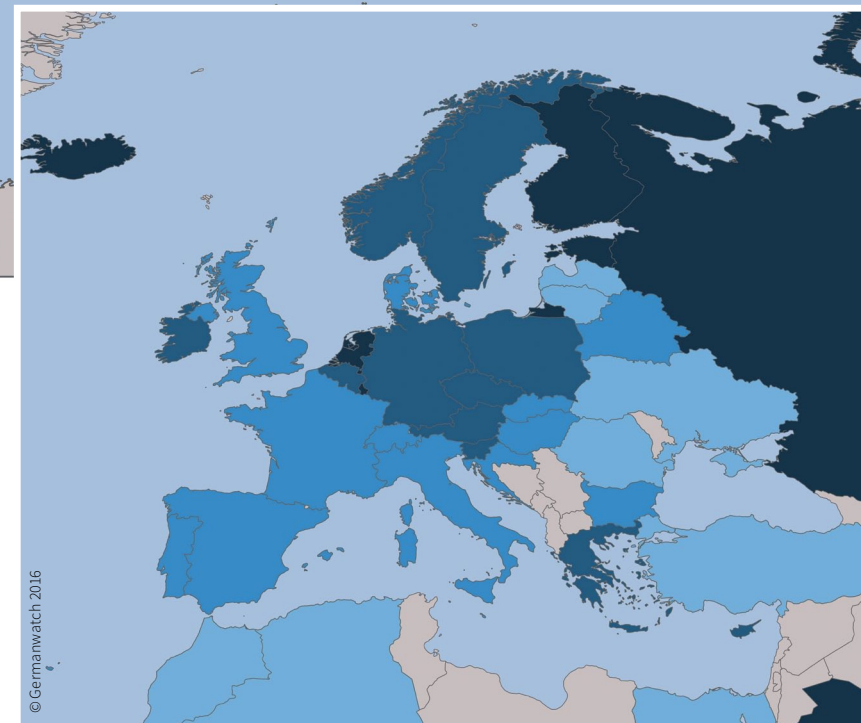
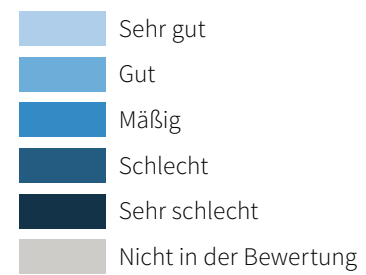
Bewertung



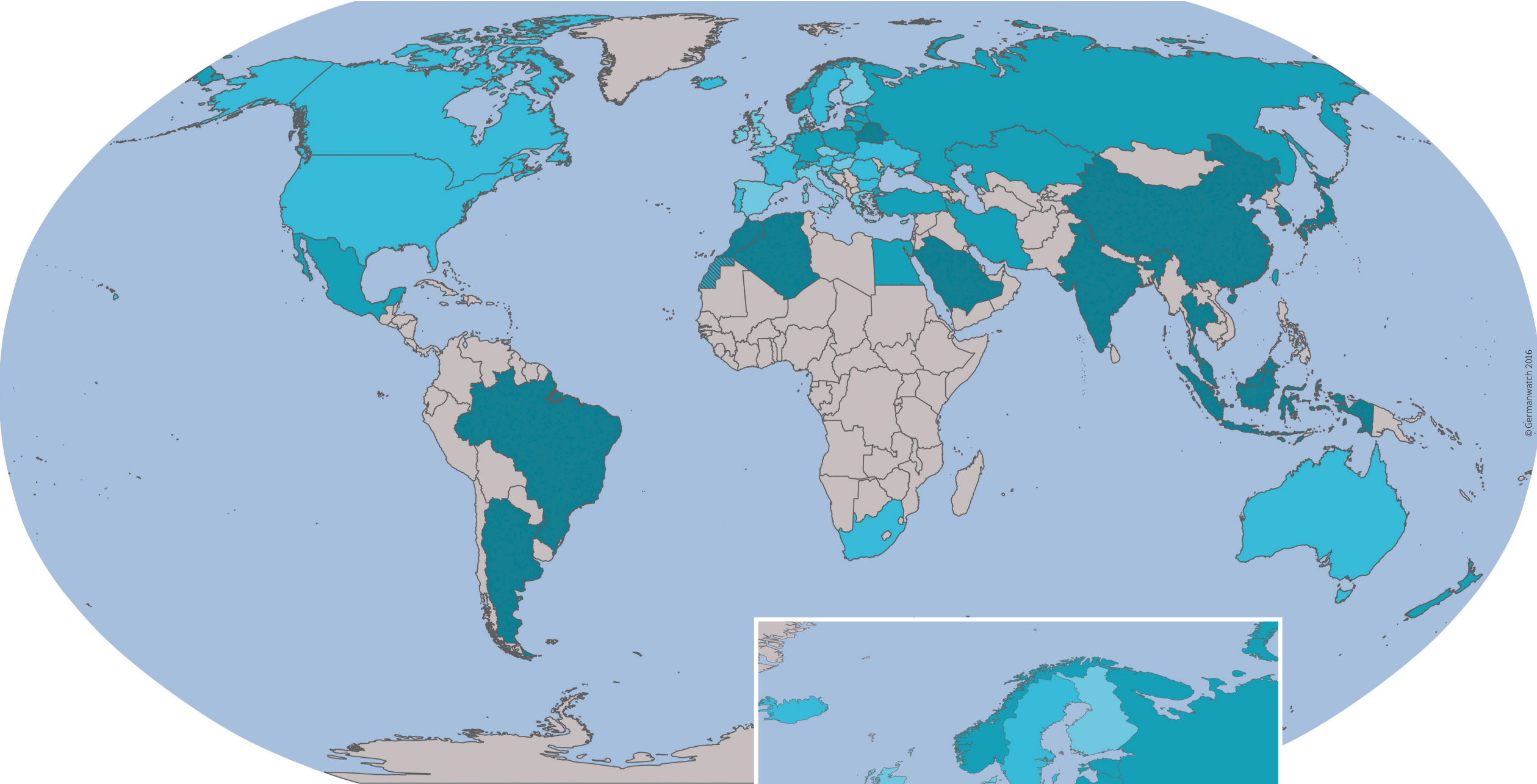
Klimaschutz-Index 2017 • Emissionsniveau



Bewertung

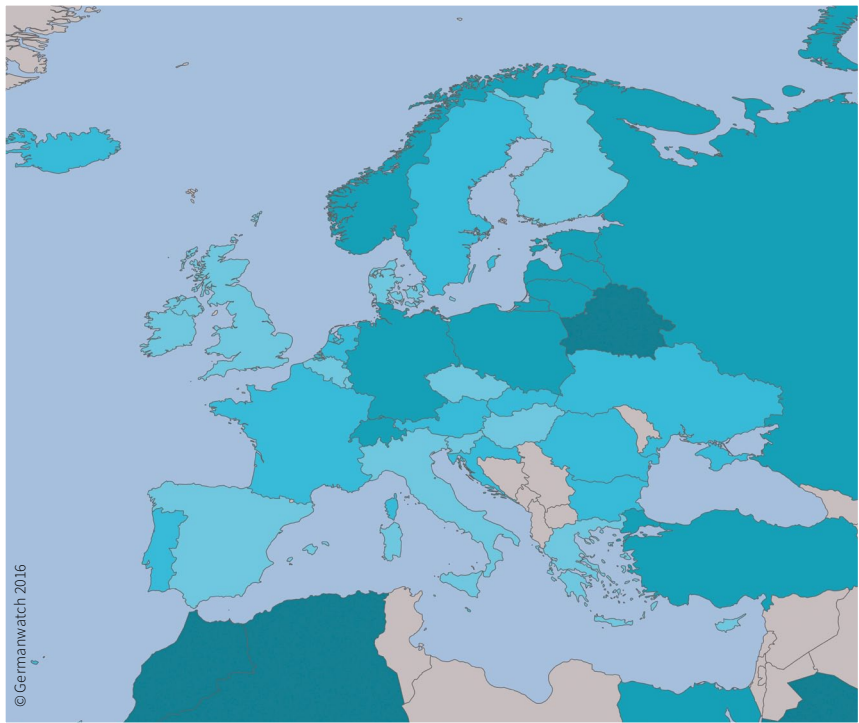


Klimaschutz-Index 2017 • Entwicklung der Emissionen

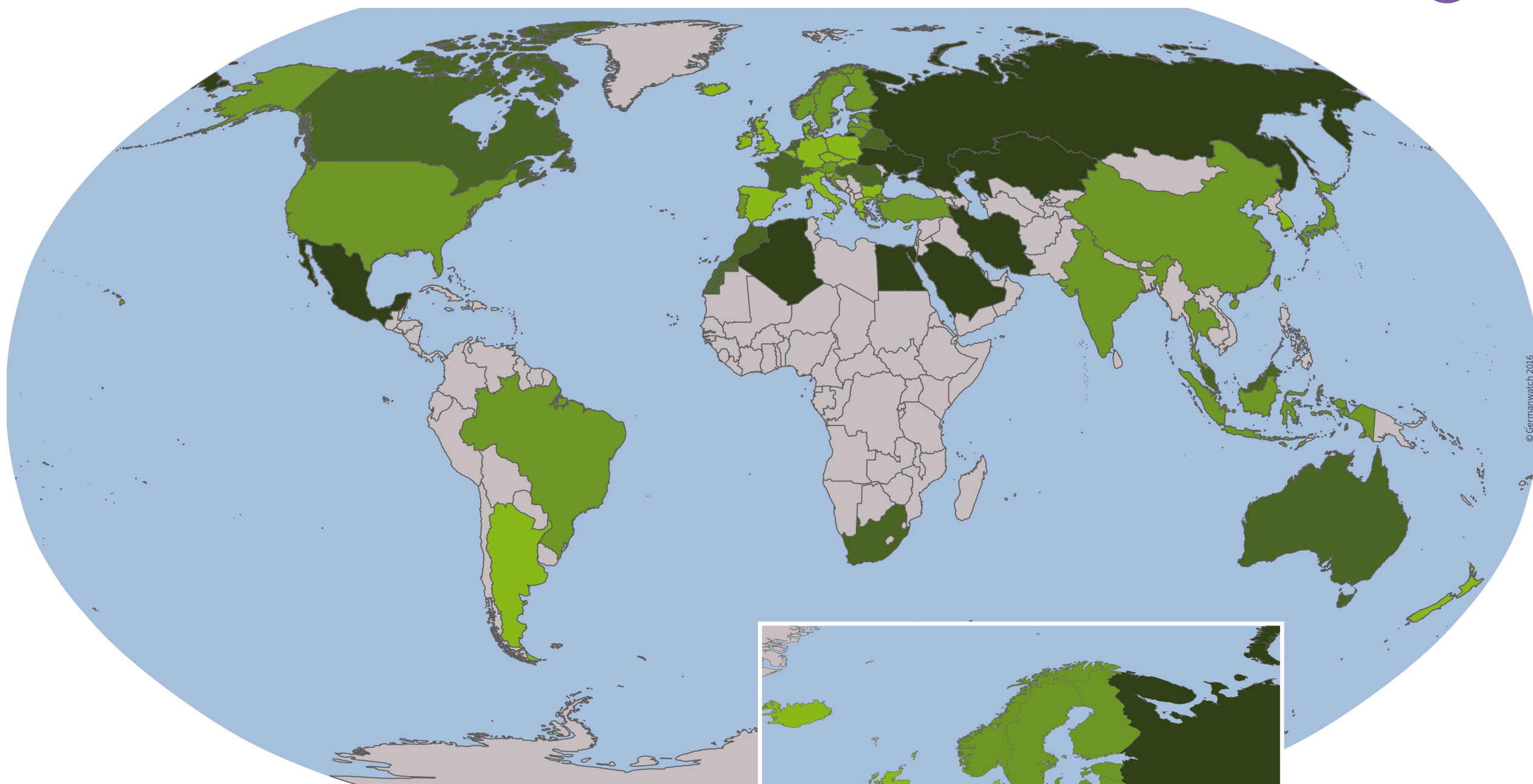


Bewertung

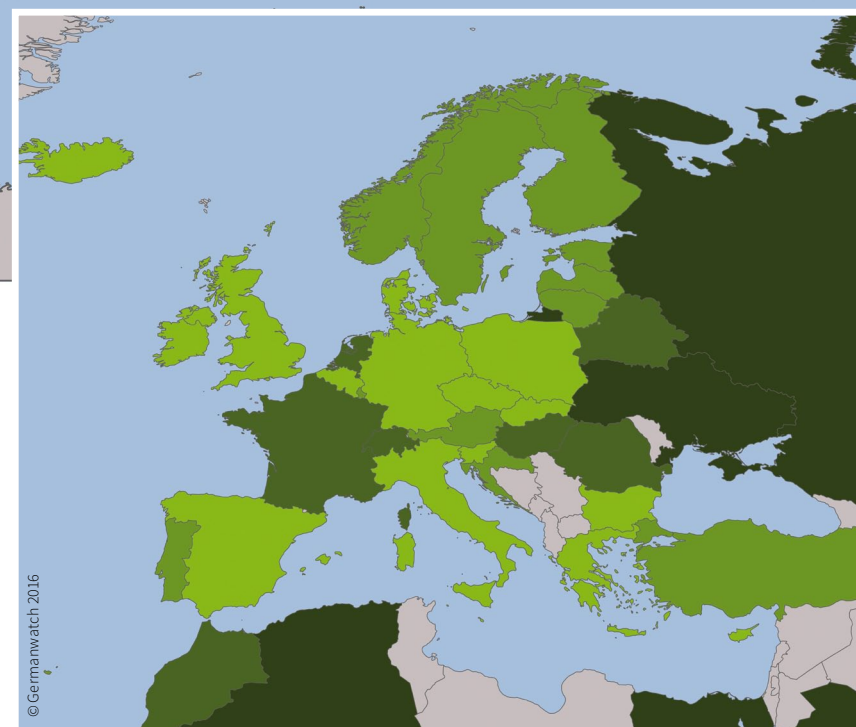
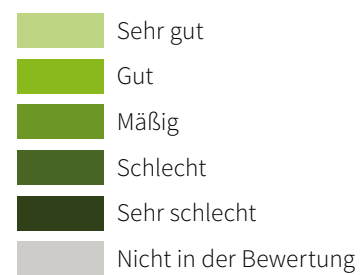
- Sehr gut
- Gut
- Mäßig
- Schlecht
- Sehr schlecht
- Nicht in der Bewertung



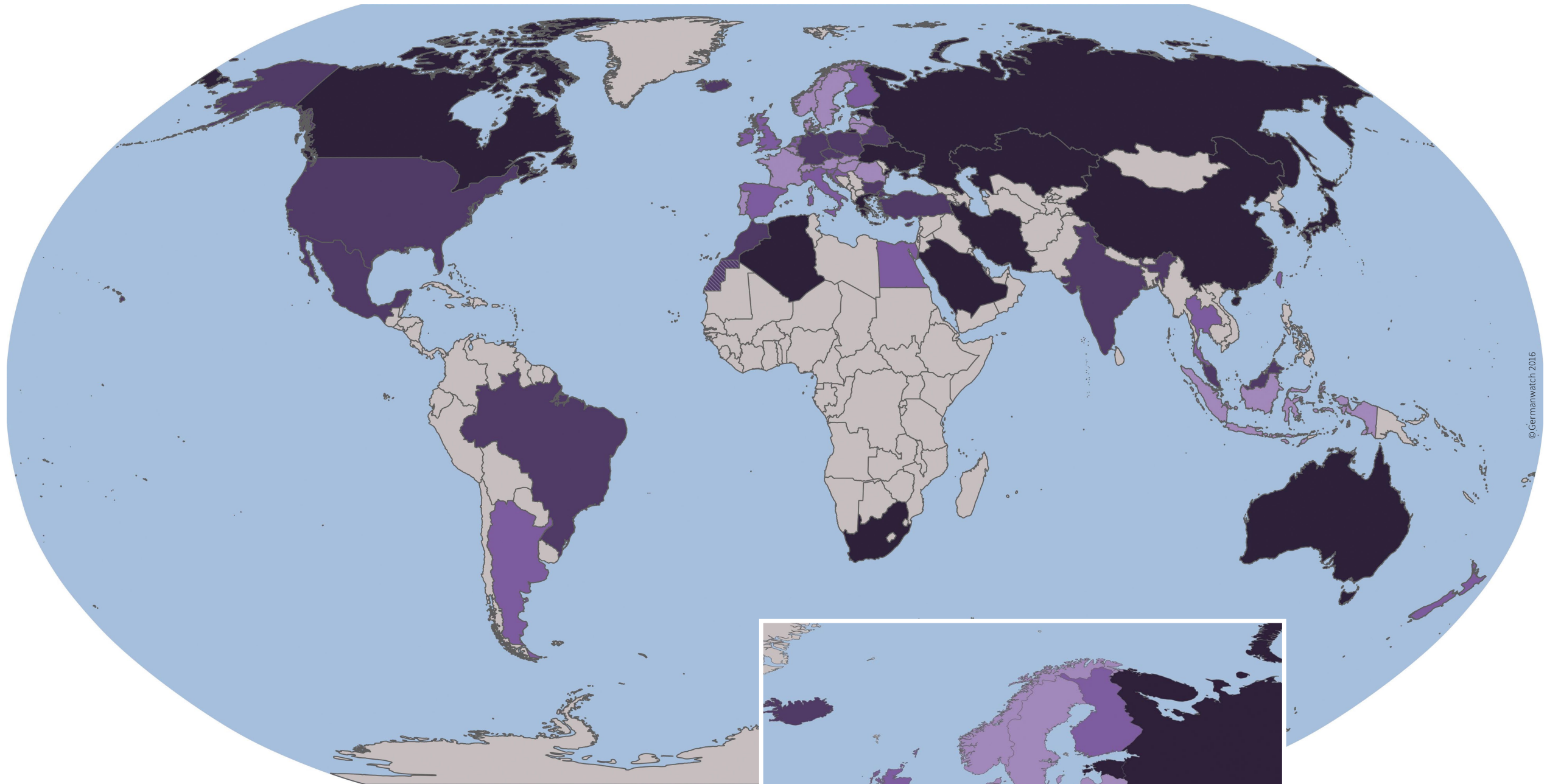
Klimaschutz-Index 2017 • Erneuerbare Energien



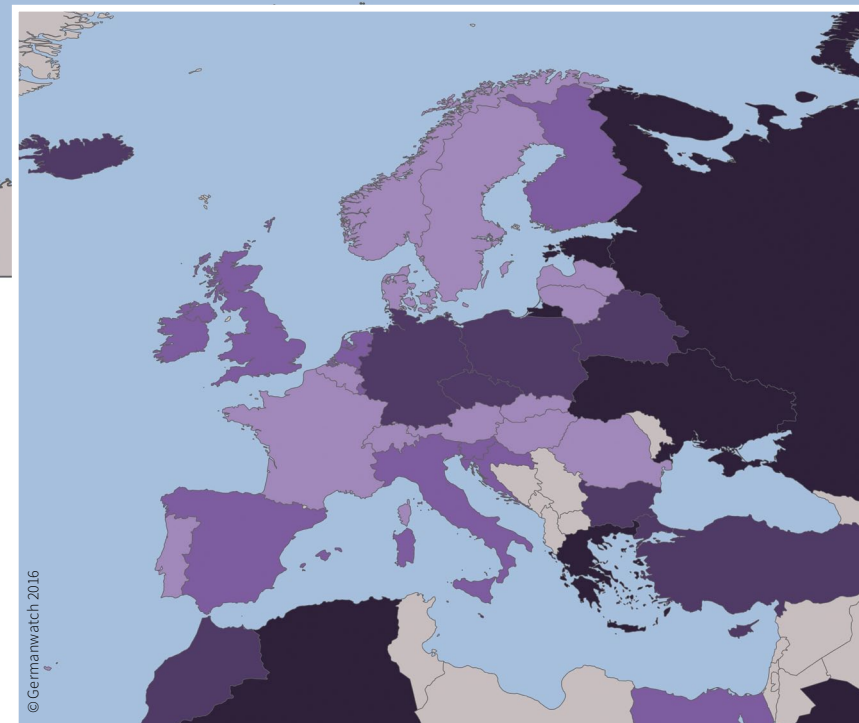
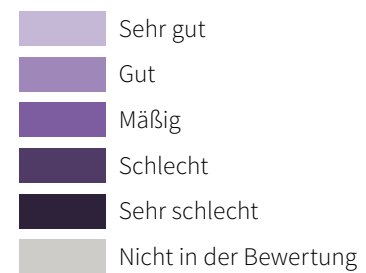
Bewertung



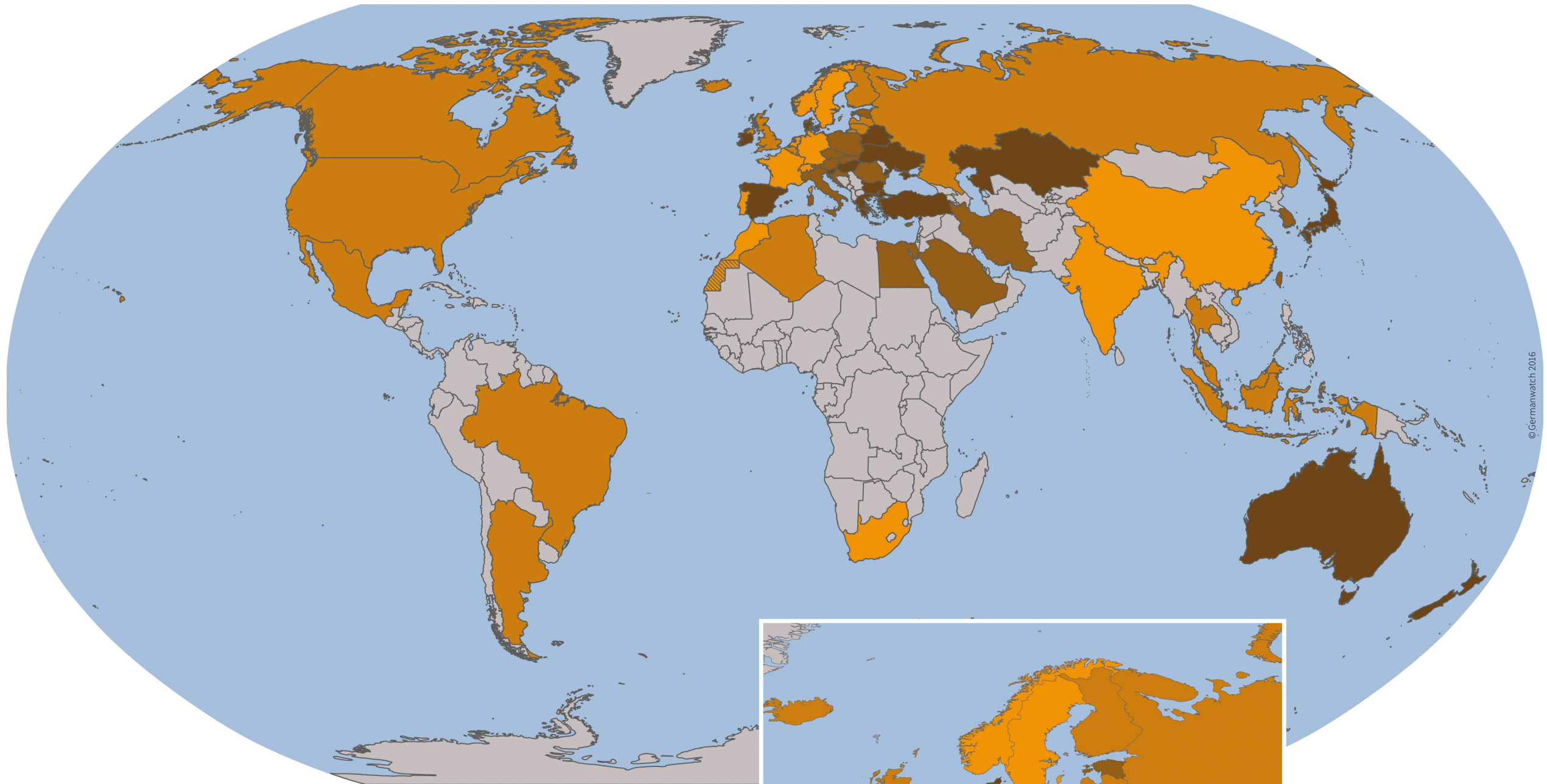
Klimaschutz-Index 2017 • Effizienz



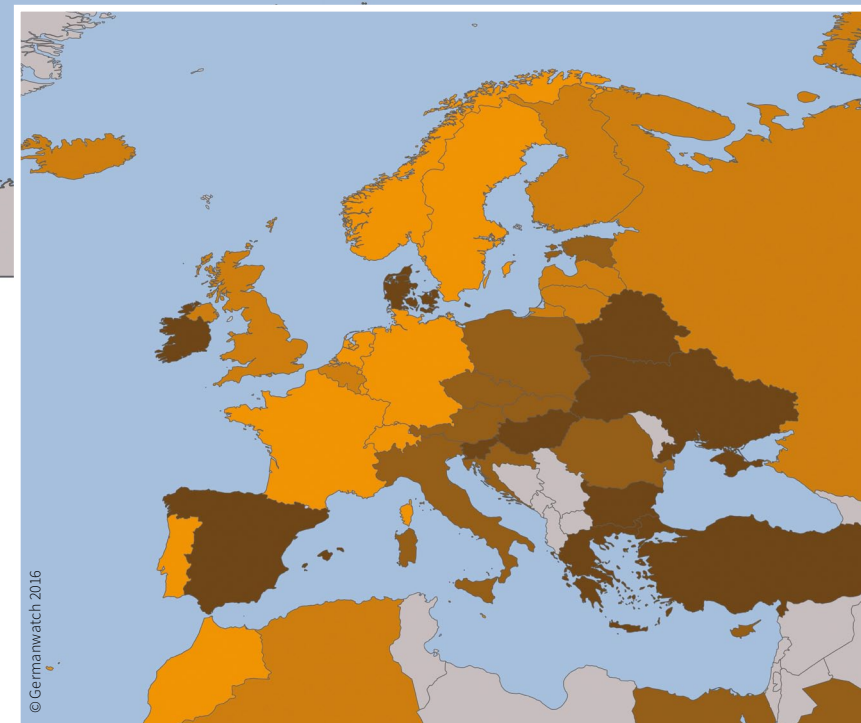
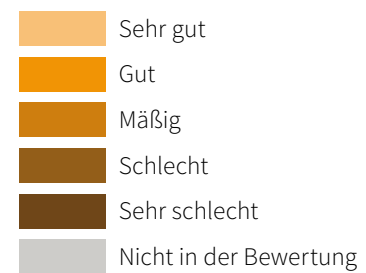
Bewertung



Klimaschutz-Index 2017 • Klimapolitik



Bewertung



Kerndaten der zehn größten CO₂-Emittenten

| Land | Index- Platzierung 2017 2016 | | Anteil am welt- weiten Brutto- inlandsprodukt | Anteil an der Erdbbevölkerung | Anteil an den weltweiten CO ₂ -Emissionen* | Anteil am welt- weiten Primär- energieverbrauch |
|---------------|---|----|---|----------------------------------|---|---|
| Indien | 20 | 23 | 6,81% | 17,87% | 6,24% | 6,02% |
| Deutschland | 29 | 27 | 3,39% | 1,12% | 2,23% | 2,23% |
| USA | 43 | 35 | 15,94% | 4,40% | 15,99% | 16,18% |
| China | 48 | 48 | 16,98% | 18,92% | 28,21% | 22,38% |
| Russland | 53 | 53 | 3,18% | 1,98% | 4,53% | 5,19% |
| Kanada | 55 | 56 | 1,48% | 0,49% | 1,71% | 2,04% |
| Iran | 56 | 55 | 1,25% | 1,08% | 1,72% | 1,73% |
| Südkorea | 58 | 59 | 1,67% | 0,70% | 1,75% | 1,96% |
| Japan | 60 | 58 | 4,38% | 1,75% | 3,67% | 3,22% |
| Saudi-Arabien | 61 | 61 | 1,48% | 0,43% | 1,56% | 1,56% |
| Gesamt | | | 56,54% | 48,74% | 67,62% | 62,52% |

* energiebedingte Emissionen

Kerndaten der G20-Länder

| Land | Index- Platzierung 2017 2016 | | Anteil am welt- weiten Brutto- inlandsprodukt | Anteil an der Erdbevölkerung | Anteil an den weltweiten CO ₂ -Emissionen* | Anteil am welt- weiten Primär- energieverbrauch |
|----------------|------------------------------------|----|---|---------------------------------|---|---|
| Frankreich | 4 | 8 | 2,37% | 0,91% | 0,88% | 1,77% |
| Großbritannien | 6 | 5 | 2,41% | 0,89% | 1,26% | 1,31% |
| Italien | 16 | 20 | 1,94% | 0,84% | 0,99% | 1,07% |
| Indien | 20 | 23 | 6,81% | 17,87% | 6,24% | 6,02% |
| Indonesien | 22 | 19 | 2,47% | 3,51% | 1,35% | 1,65% |
| Mexiko | 28 | 26 | 1,91% | 1,65% | 1,33% | 1,37% |
| Deutschland | 29 | 27 | 3,39% | 1,12% | 2,23% | 2,23% |
| Südafrika | 32 | 43 | 0,65% | 0,74% | 1,35% | 1,07% |
| Argentinien | 36 | 49 | 0,80% | 0,59% | 0,59% | 0,63% |
| Brasilien | 40 | 42 | 3,02% | 2,84% | 1,47% | 2,21% |
| USA | 43 | 35 | 15,94% | 4,40% | 15,99% | 16,18% |
| China | 48 | 48 | 16,98% | 18,92% | 28,21% | 22,38% |
| Türkei | 51 | 51 | 1,37% | 1,06% | 0,95% | 0,89% |
| Russland | 53 | 53 | 3,18% | 1,98% | 4,53% | 5,19% |
| Kanada | 55 | 56 | 1,48% | 0,49% | 1,71% | 2,04% |
| Australien | 57 | 57 | 1,03% | 0,33% | 1,15% | 0,91% |
| Südkorea | 58 | 59 | 1,67% | 0,70% | 1,75% | 1,96% |
| Japan | 60 | 58 | 4,38% | 1,75% | 3,67% | 3,22% |
| Saudi-Arabien | 61 | 61 | 1,48% | 0,43% | 1,56% | 1,56% |

* energiebedingte Emissionen

Kerndaten der G7-Länder

| Land | Index- Platzierung 2017 2016 | | Anteil am welt- weiten Brutto- inlandsprodukt | Anteil an der Erdbbevölkerung | Anteil an den weltweiten CO ₂ -Emissionen* | Anteil am welt- weiten Primär- energieverbrauch |
|----------------|---|----|---|----------------------------------|---|---|
| Frankreich | 4 | 8 | 2,37% | 0,91% | 0,88% | 1,77% |
| Großbritannien | 6 | 5 | 2,41% | 0,89% | 1,26% | 1,31% |
| Italien | 16 | 20 | 1,94% | 0,84% | 0,99% | 1,07% |
| Deutschland | 29 | 27 | 3,39% | 1,12% | 2,23% | 2,23% |
| USA | 43 | 35 | 15,94% | 4,40% | 15,99% | 16,18% |
| Kanada | 55 | 56 | 1,48% | 0,49% | 1,71% | 2,04% |
| Japan | 60 | 58 | 4,38% | 1,75% | 3,67% | 3,22% |

* energiebedingte Emissionen

Kerndaten der EU-Länder

| Land | Index- Platzierung 2017 2016 | | Anteil am welt- weiten Brutto- inlandsprodukt | Anteil an der Erdbevölkerung | Anteil an den weltweiten CO ₂ -Emissionen* | Anteil am welt- weiten Primär- energieverbrauch |
|-------------------|------------------------------------|----|---|---------------------------------|---|---|
| Frankreich | 4 | 8 | 2,37% | 0,91% | 0,88% | 1,77% |
| Schweden | 5 | 6 | 0,41% | 0,13% | 0,12% | 0,35% |
| Großbritannien | 6 | 5 | 2,41% | 0,89% | 1,26% | 1,31% |
| Zypern | 7 | 9 | 0,03% | 0,01% | 0,02% | 0,01% |
| Luxemburg | 9 | 13 | 0,05% | 0,01% | 0,03% | 0,03% |
| Malta | 10 | 11 | 0,01% | 0,01% | 0,01% | 0,01% |
| Portugal | 11 | 18 | 0,26% | 0,14% | 0,13% | 0,15% |
| Belgien | 12 | 7 | 0,44% | 0,15% | 0,27% | 0,39% |
| Dänemark | 13 | 4 | 0,23% | 0,08% | 0,11% | 0,12% |
| Lettland | 15 | 14 | 0,04% | 0,03% | 0,02% | 0,03% |
| Italien | 16 | 20 | 1,94% | 0,84% | 0,99% | 1,07% |
| Kroatien | 17 | 28 | 0,08% | 0,06% | 0,05% | 0,06% |
| Rumänien | 18 | 16 | 0,36% | 0,27% | 0,21% | 0,23% |
| Litauen | 19 | 21 | 0,07% | 0,04% | 0,03% | 0,05% |
| Irland | 21 | 12 | 0,21% | 0,06% | 0,10% | 0,09% |
| Tschechische Rep. | 24 | 30 | 0,29% | 0,15% | 0,30% | 0,30% |
| Griechenland | 25 | 36 | 0,26% | 0,15% | 0,20% | 0,17% |
| Slowakei | 26 | 25 | 0,14% | 0,07% | 0,09% | 0,12% |
| Niederlande | 27 | 33 | 0,74% | 0,23% | 0,46% | 0,53% |
| Deutschland | 29 | 27 | 3,39% | 1,12% | 2,23% | 2,23% |
| Slowenien | 30 | 31 | 0,06% | 0,03% | 0,04% | 0,05% |
| Finnland | 31 | 24 | 0,20% | 0,08% | 0,14% | 0,25% |
| Spanien | 33 | 32 | 1,43% | 0,64% | 0,72% | 0,84% |
| Ungarn | 34 | 17 | 0,22% | 0,14% | 0,12% | 0,17% |
| Polen | 35 | 34 | 0,87% | 0,53% | 0,86% | 0,69% |
| Bulgarien | 37 | 38 | 0,12% | 0,10% | 0,13% | 0,13% |
| Österreich | 41 | 44 | 0,36% | 0,12% | 0,19% | 0,23% |
| Estland | 50 | 50 | 0,03% | 0,02% | 0,05% | 0,04% |

* energiebedingte Emissionen

Kerndaten der Transformationsländer

| Land | Index-Platzierung | | Anteil am weltweiten Bruttoinlandsprodukt | Anteil an der Erdbevölkerung | Anteil an den weltweiten CO ₂ -Emissionen* | Anteil am weltweiten Primärenergieverbrauch |
|-------------------|-------------------|------|---|------------------------------|---|---|
| | 2017 | 2016 | | | | |
| Lettland | 15 | 14 | 0,04% | 0,03% | 0,02% | 0,03% |
| Kroatien | 17 | 28 | 0,08% | 0,06% | 0,05% | 0,06% |
| Rumänien | 18 | 16 | 0,36% | 0,27% | 0,21% | 0,23% |
| Litauen | 19 | 21 | 0,07% | 0,04% | 0,03% | 0,05% |
| Tschechische Rep. | 24 | 30 | 0,29% | 0,15% | 0,30% | 0,30% |
| Slowakei | 26 | 25 | 0,14% | 0,07% | 0,09% | 0,12% |
| Slowenien | 30 | 31 | 0,06% | 0,03% | 0,04% | 0,05% |
| Ungarn | 34 | 17 | 0,22% | 0,14% | 0,12% | 0,17% |
| Polen | 35 | 34 | 0,87% | 0,53% | 0,86% | 0,69% |
| Bulgarien | 37 | 38 | 0,12% | 0,10% | 0,13% | 0,13% |
| Ukraine | 45 | 46 | 0,34% | 0,63% | 0,73% | 0,77% |
| Weißrussland | 49 | 45 | 0,16% | 0,13% | 0,18% | 0,20% |
| Estland | 50 | 50 | 0,03% | 0,02% | 0,05% | 0,04% |
| Russland | 53 | 53 | 3,18% | 1,98% | 4,53% | 5,19% |
| Kasachstan | 59 | 60 | 0,39% | 0,24% | 0,69% | 0,56% |

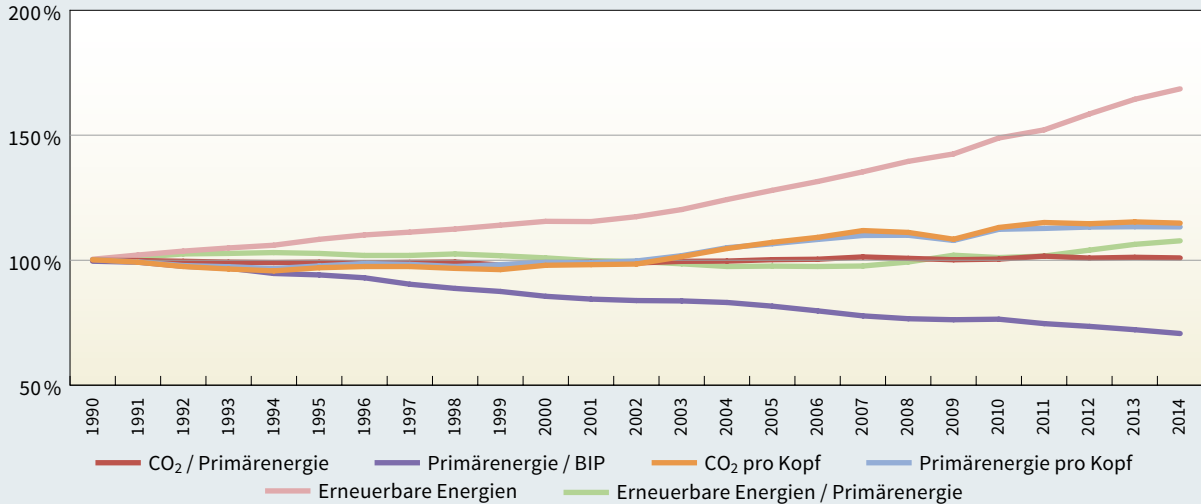
* energiebedingte Emissionen

Kerndaten der Schwellenländer

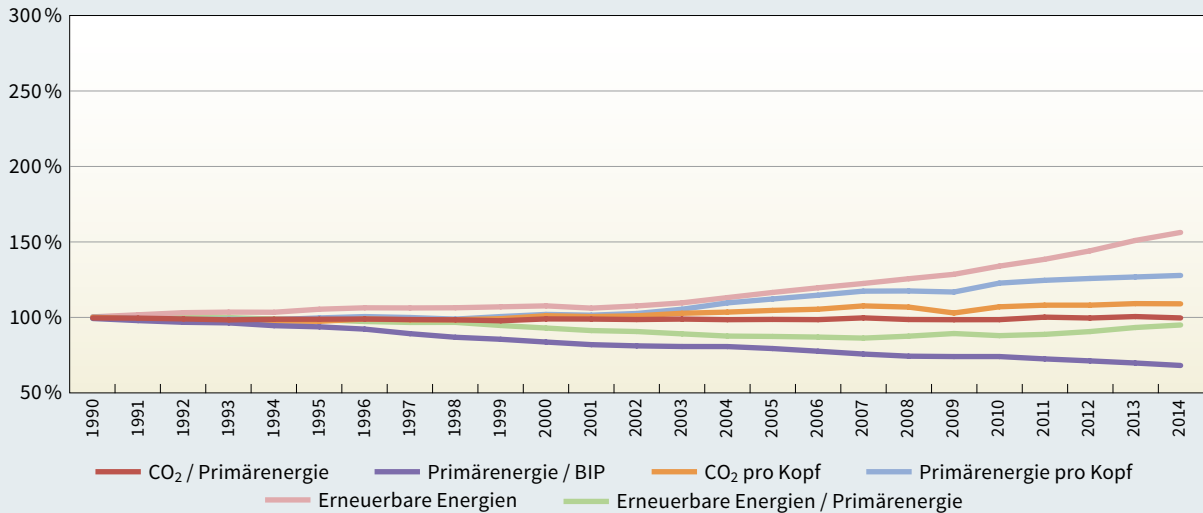
| Land | Index- Platzierung 2017 2016 | | Anteil am welt- weiten Brutto- inlandsprodukt | Anteil an der Erdbbevölkerung | Anteil an den weltweiten CO ₂ -Emissionen* | Anteil am welt- weiten Primär- energieverbrauch |
|---------------|------------------------------------|----|---|----------------------------------|---|---|
| Marokko | 8 | 10 | 0,24% | 0,47% | 0,16% | 0,14% |
| Indien | 20 | 23 | 6,81% | 17,87% | 6,24% | 6,02% |
| Indonesien | 22 | 19 | 2,47% | 3,51% | 1,35% | 1,65% |
| Ägypten | 23 | 22 | 0,87% | 1,24% | 0,54% | 0,55% |
| Mexiko | 28 | 26 | 1,91% | 1,65% | 1,33% | 1,37% |
| Südafrika | 32 | 43 | 0,65% | 0,74% | 1,35% | 1,07% |
| Argentinien | 36 | 49 | 0,80% | 0,59% | 0,59% | 0,63% |
| Brasilien | 40 | 42 | 3,02% | 2,84% | 1,47% | 2,21% |
| Thailand | 42 | 47 | 0,98% | 0,93% | 0,75% | 0,98% |
| Malaysia | 44 | 41 | 0,71% | 0,41% | 0,68% | 0,65% |
| Algerien | 47 | 39 | 0,51% | 0,54% | 0,38% | 0,38% |
| China | 48 | 48 | 16,98% | 18,92% | 28,21% | 22,38% |
| Türkei | 51 | 51 | 1,37% | 1,06% | 0,95% | 0,89% |
| Taiwan | 52 | 52 | 0,92% | 0,32% | 0,77% | 0,80% |
| Singapur | 54 | 54 | 0,42% | 0,08% | 0,14% | 0,20% |
| Iran | 56 | 55 | 1,25% | 1,08% | 1,72% | 1,73% |
| Südkorea | 58 | 59 | 1,67% | 0,70% | 1,75% | 1,96% |
| Saudi-Arabien | 61 | 61 | 1,48% | 0,43% | 1,56% | 1,56% |

* energiebedingte Emissionen

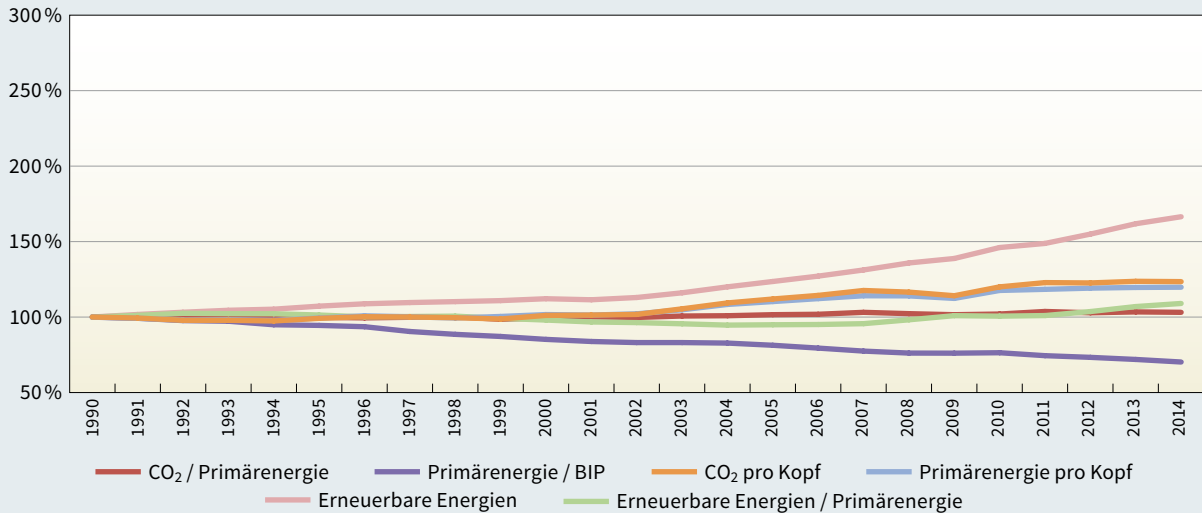
Globale Entwicklung zentraler Indikatoren seit 1990



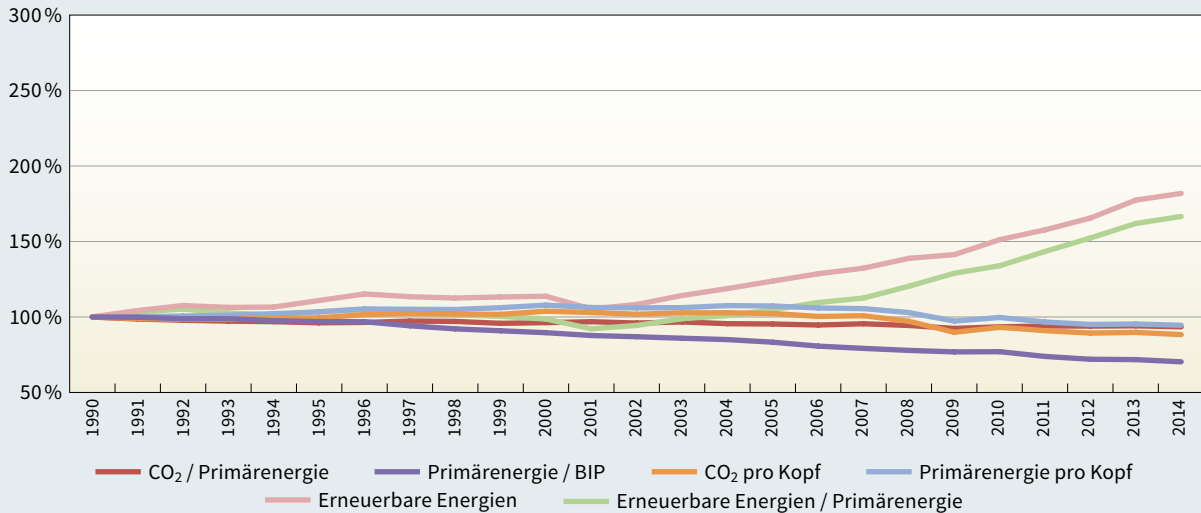
Zentrale Indikatoren für die 10 größten CO₂ Emittenten



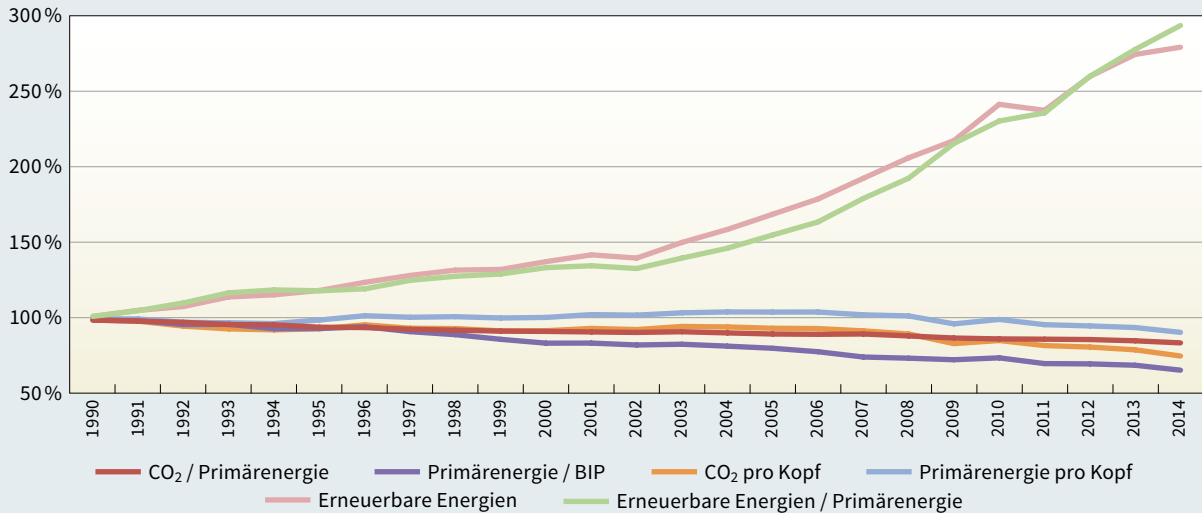
Zentrale Indikatoren für die G20-Länder



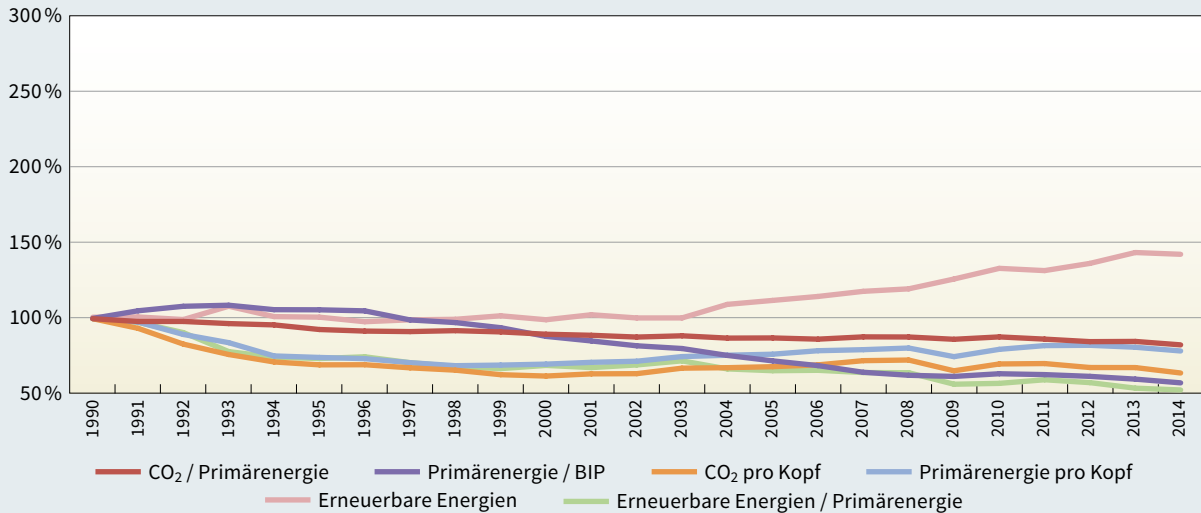
Zentrale Indikatoren für die G7-Länder



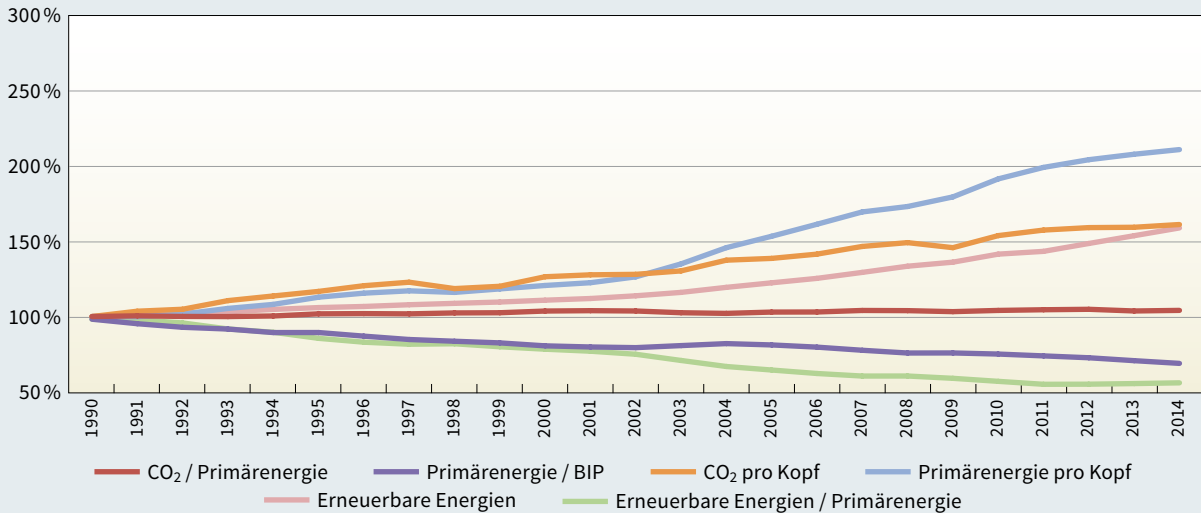
Zentrale Indikatoren für die EU-Länder



Zentrale Indikatoren für die Transformationsländer

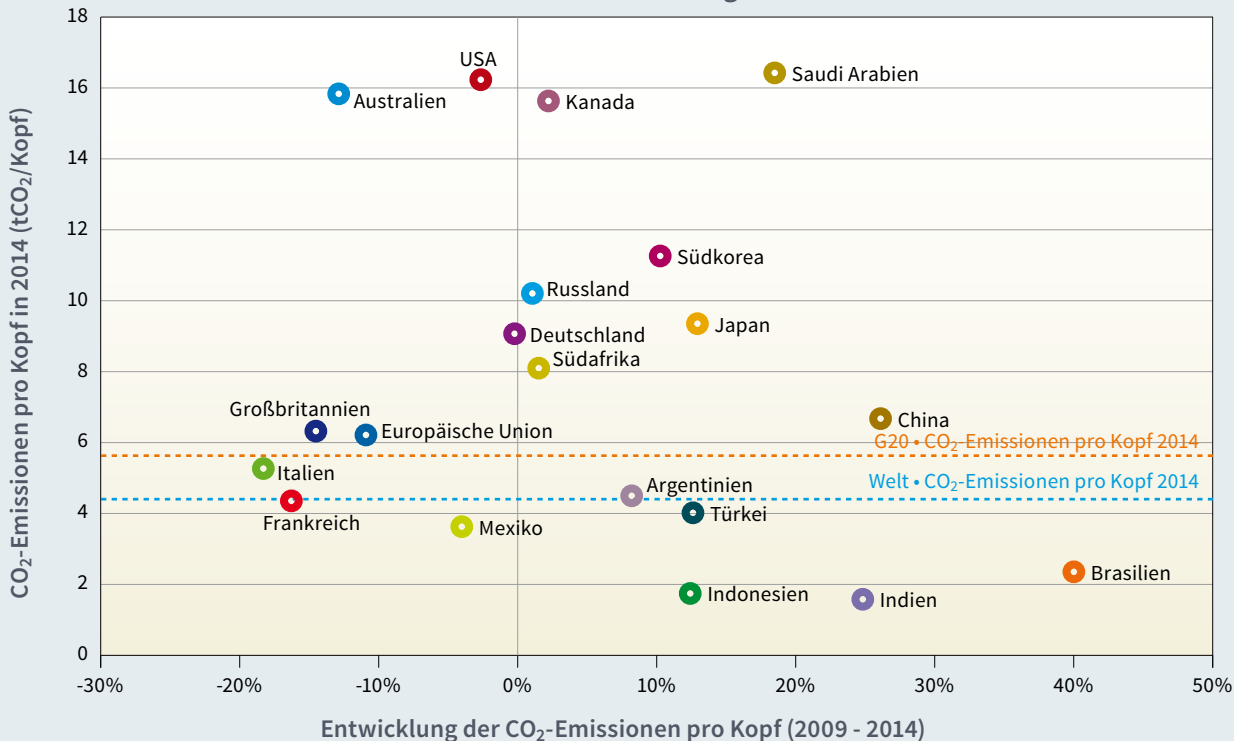


Zentrale Indikatoren für die Schwellenländer



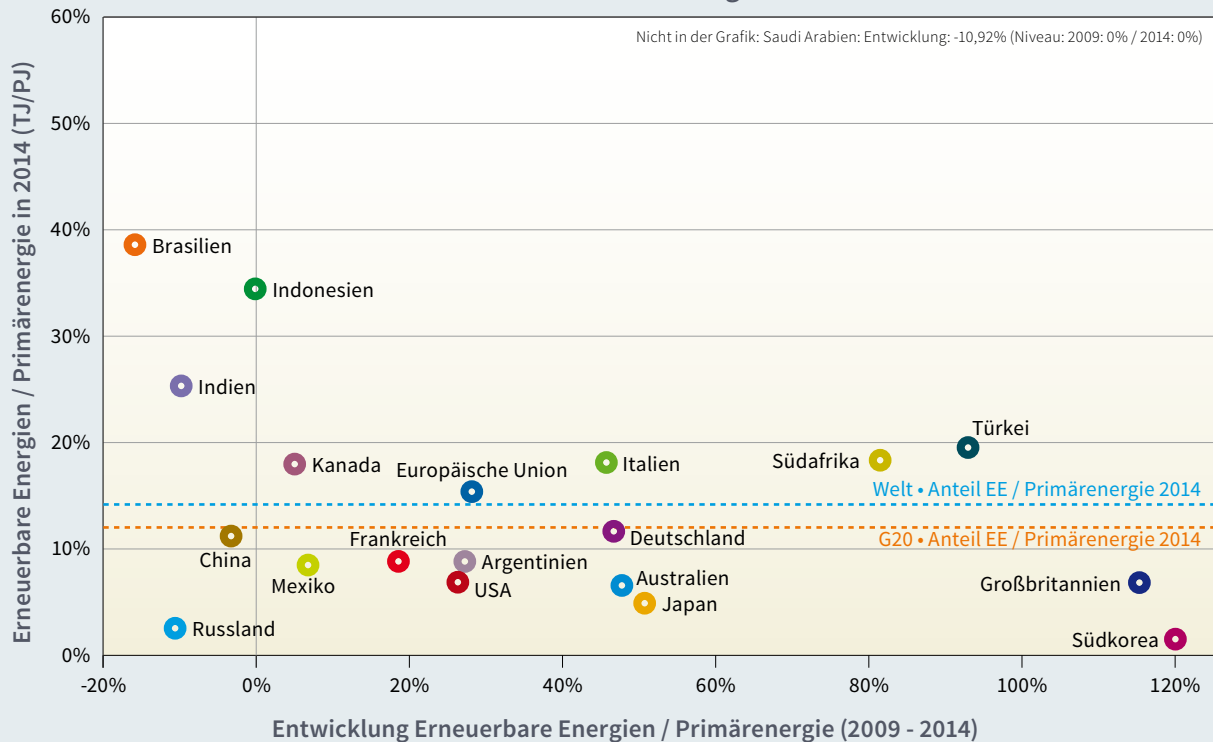
G20 • CO₂-Emissionen pro Kopf

Niveau 2014 und Entwicklung 2009-2014



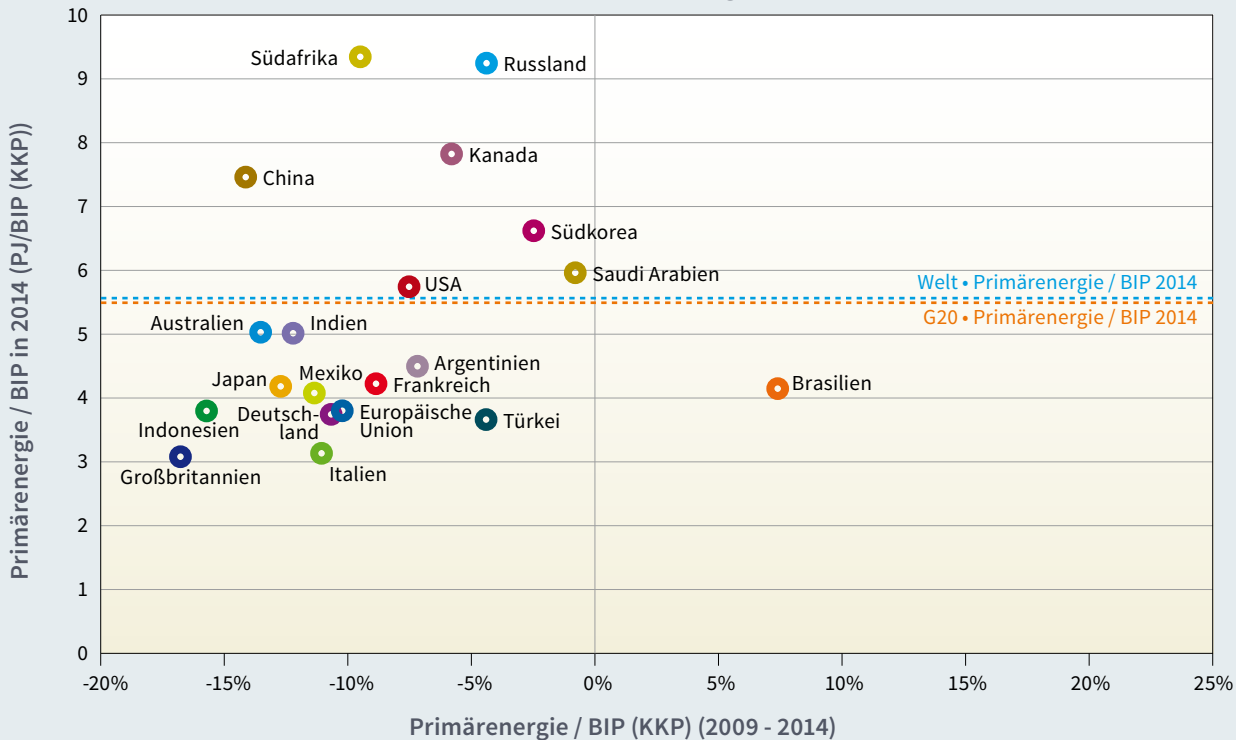
G20 • Erneuerbare Energien / Primärenergie

Niveau 2014 und Entwicklung 2009-2014



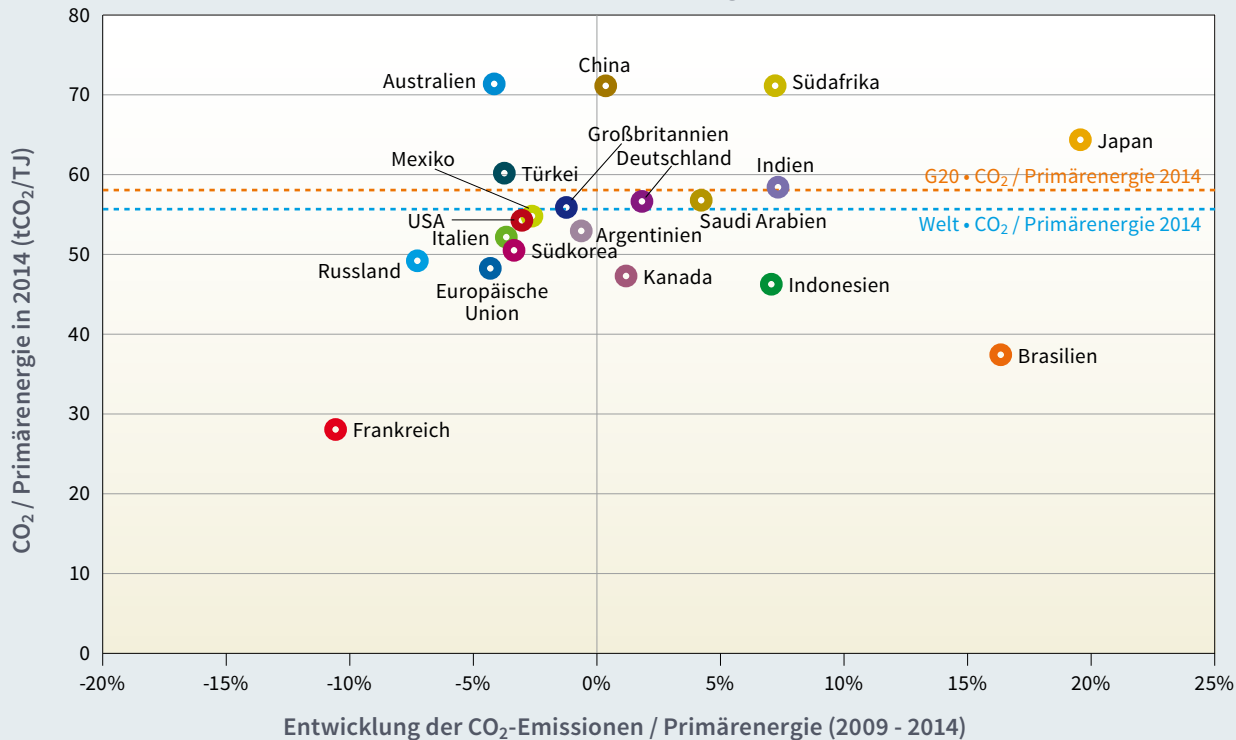
G20 • Primärenergie / BIP

Niveau 2014 und Entwicklung 2009-2014



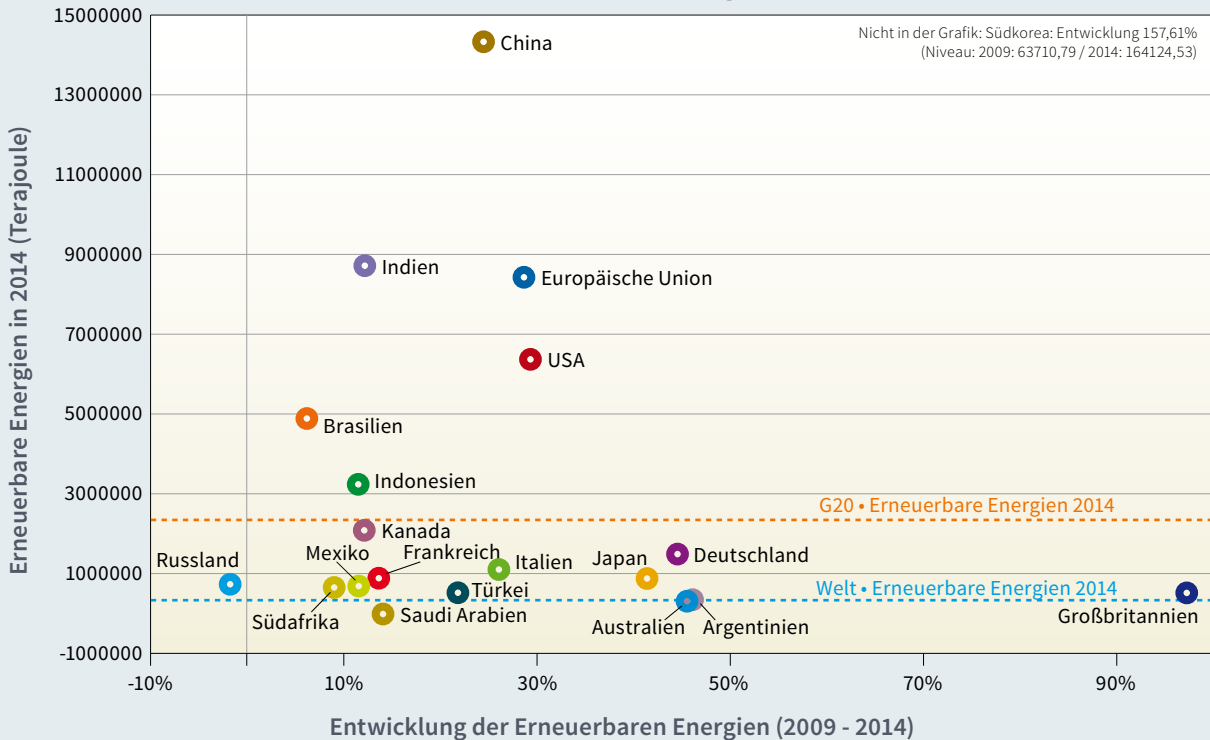
G20 • CO₂ / Primärenergie

Niveau 2014 und Entwicklung 2009-2014



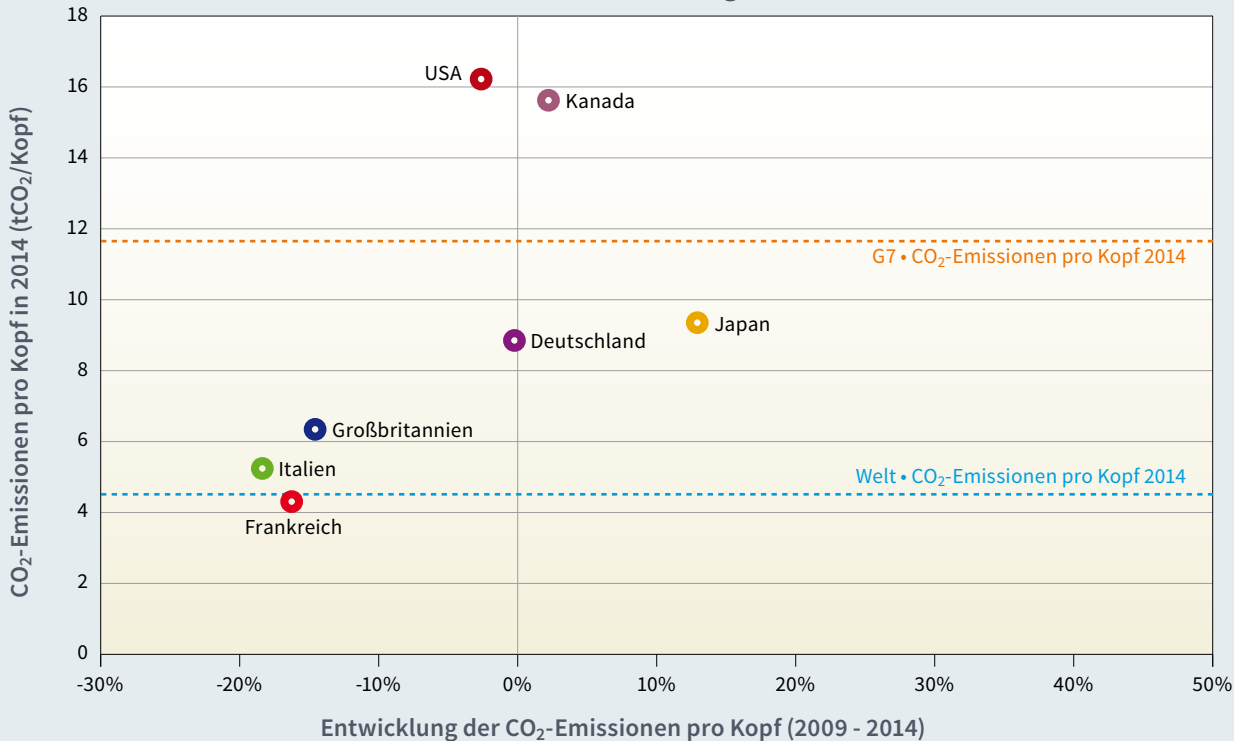
G20 • Erneuerbare Energien

Niveau 2014 und Entwicklung 2009-2014



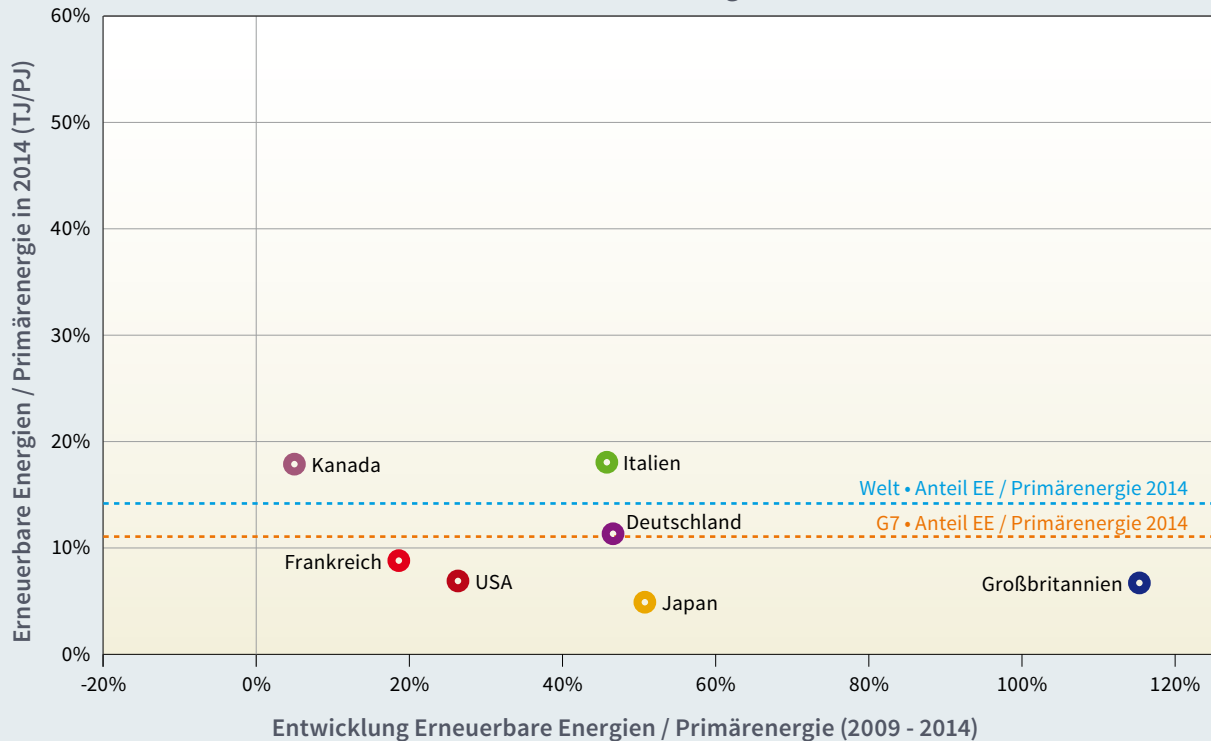
G7 • CO₂-Emissionen pro Kopf

Niveau 2014 und Entwicklung 2009-2014



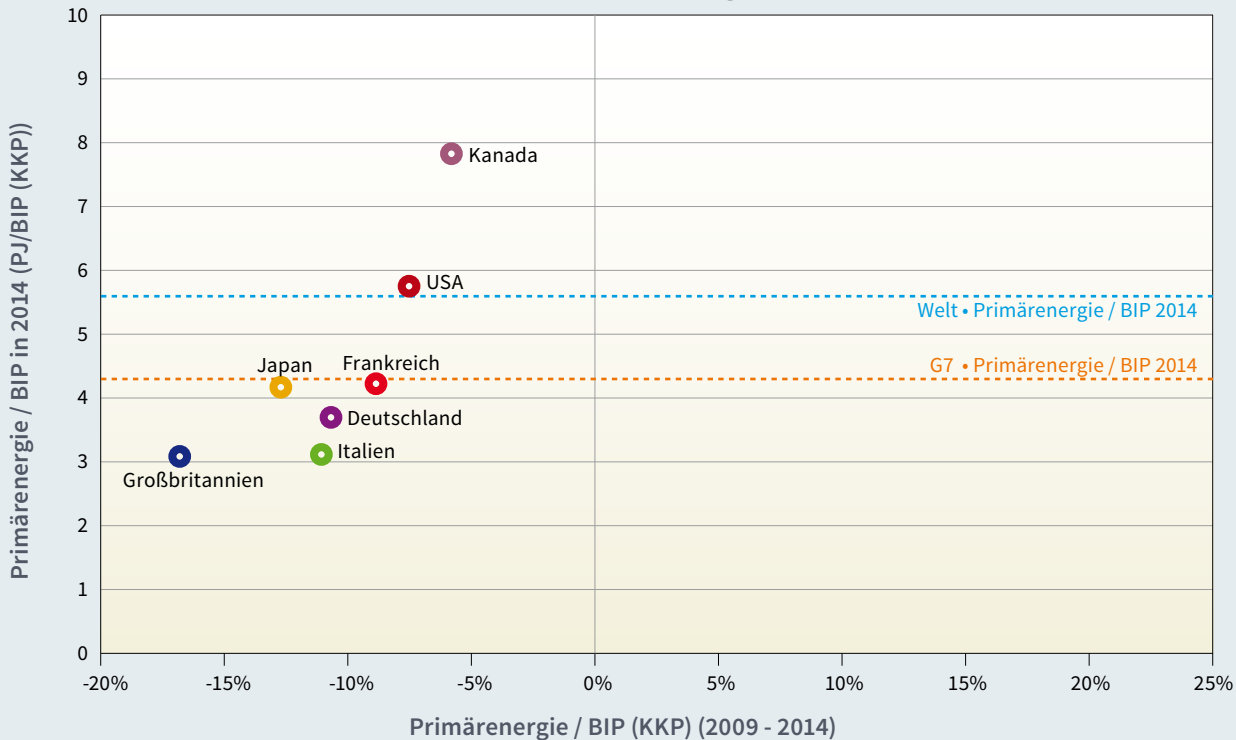
G7 • Erneuerbare Energien / Primärenergie

Niveau 2014 und Entwicklung 2009-2014



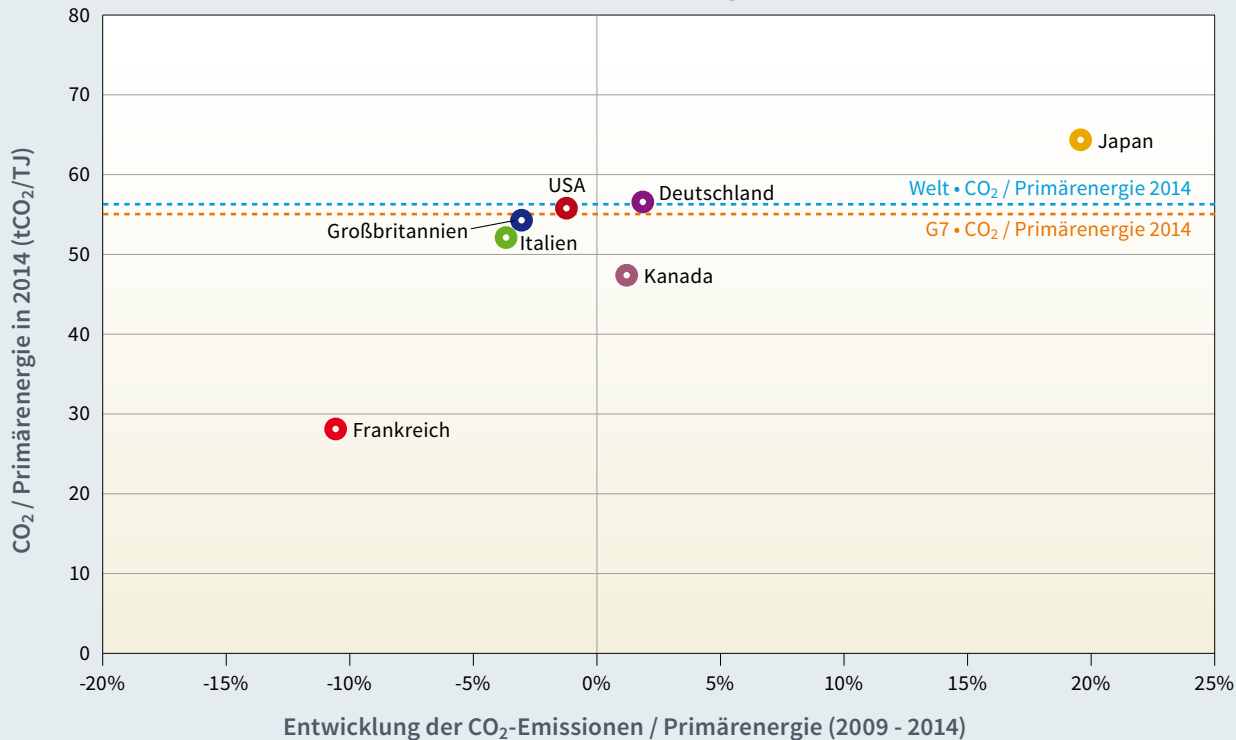
G7 • Primärenergie / BIP

Niveau 2014 und Entwicklung 2009-2014



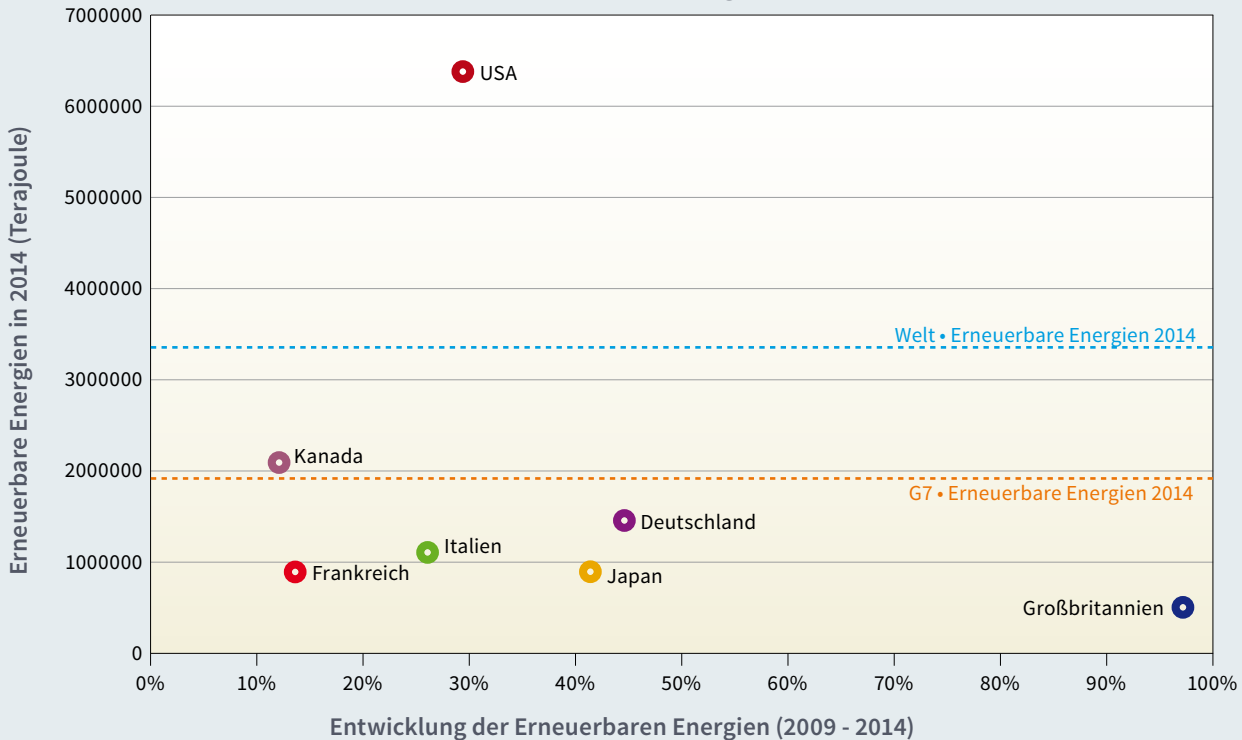
G7 • CO₂ / Primärenergie

Niveau 2014 und Entwicklung 2009-2014



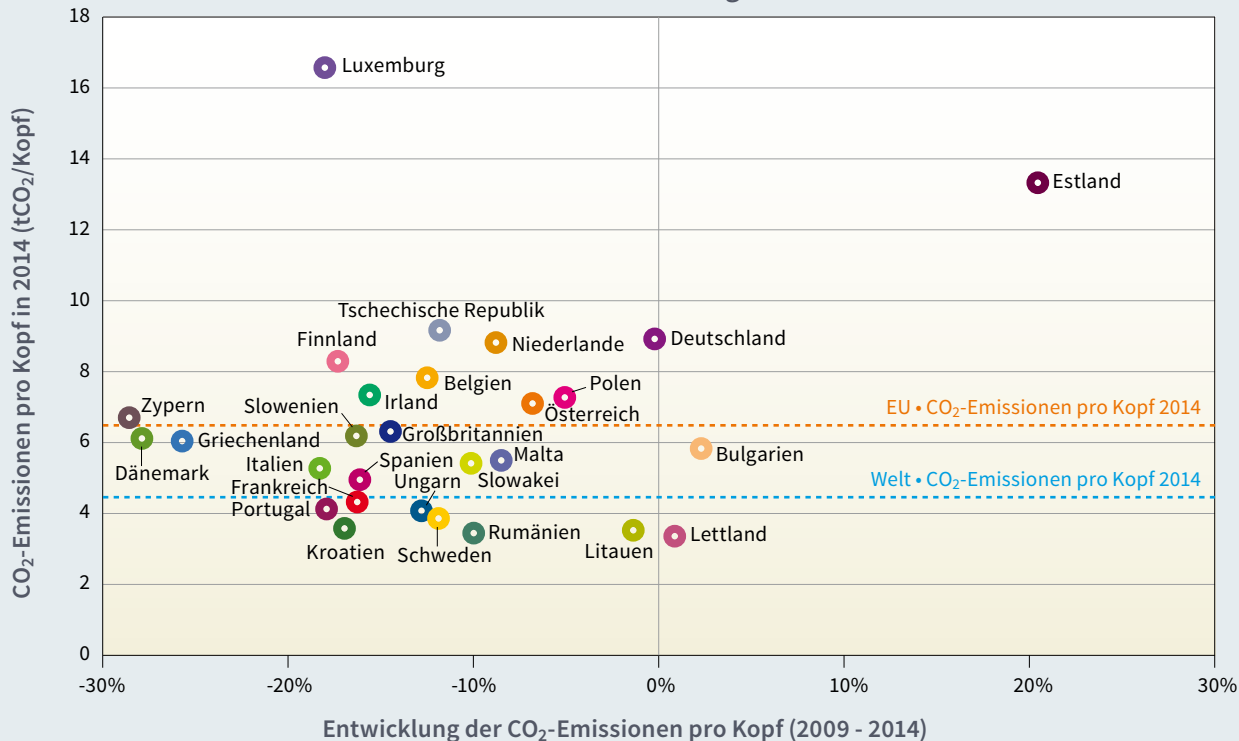
G7 • Erneuerbare Energien

Niveau 2014 und Entwicklung 2009-2014



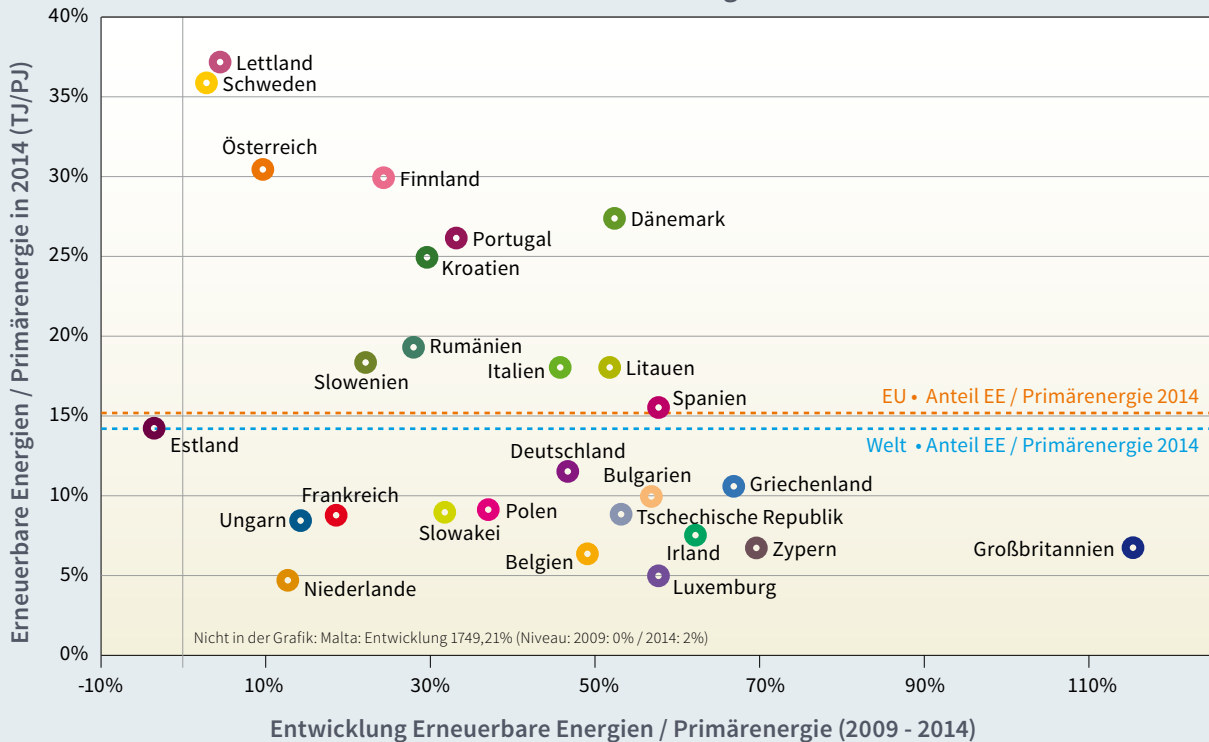
Europäische Union • CO₂-Emissionen pro Kopf

Niveau 2014 und Entwicklung 2009-2014



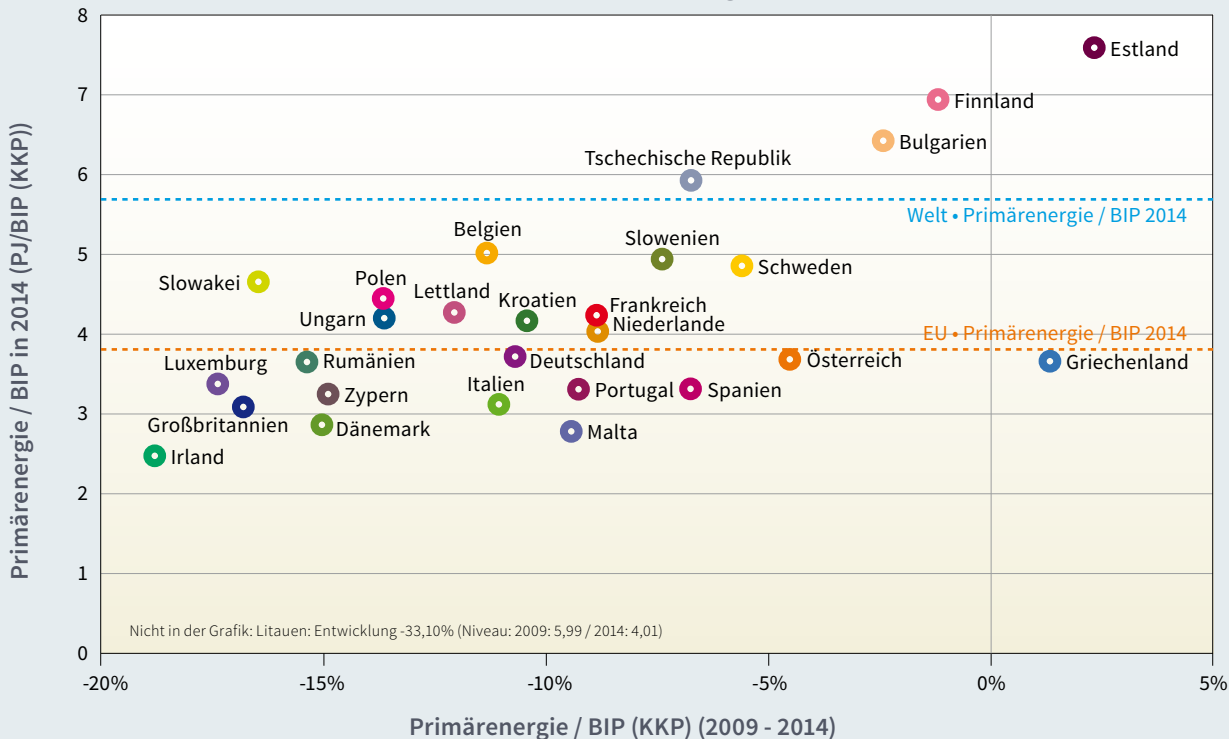
Europäische Union • Erneuerbare Energien / Primärenergie

Niveau 2014 und Entwicklung 2009-2014

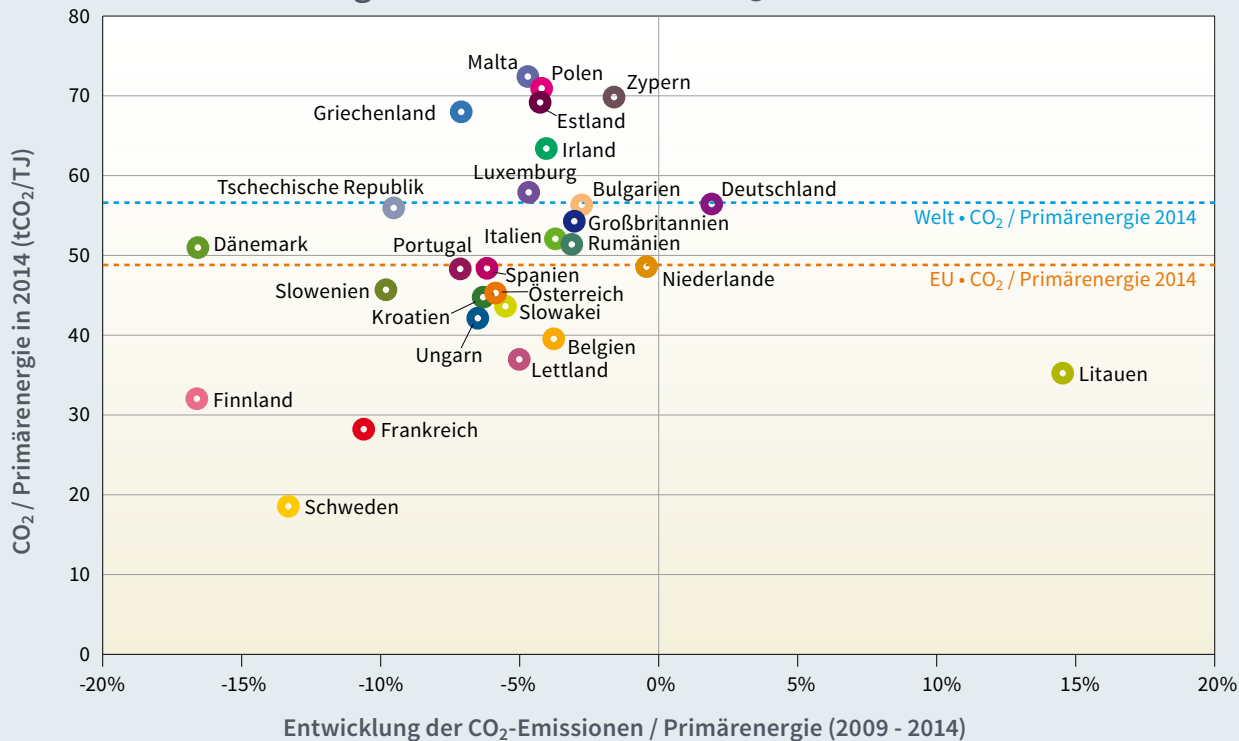


Europäische Union • Primärenergie / BIP

Niveau 2014 und Entwicklung 2009-2014

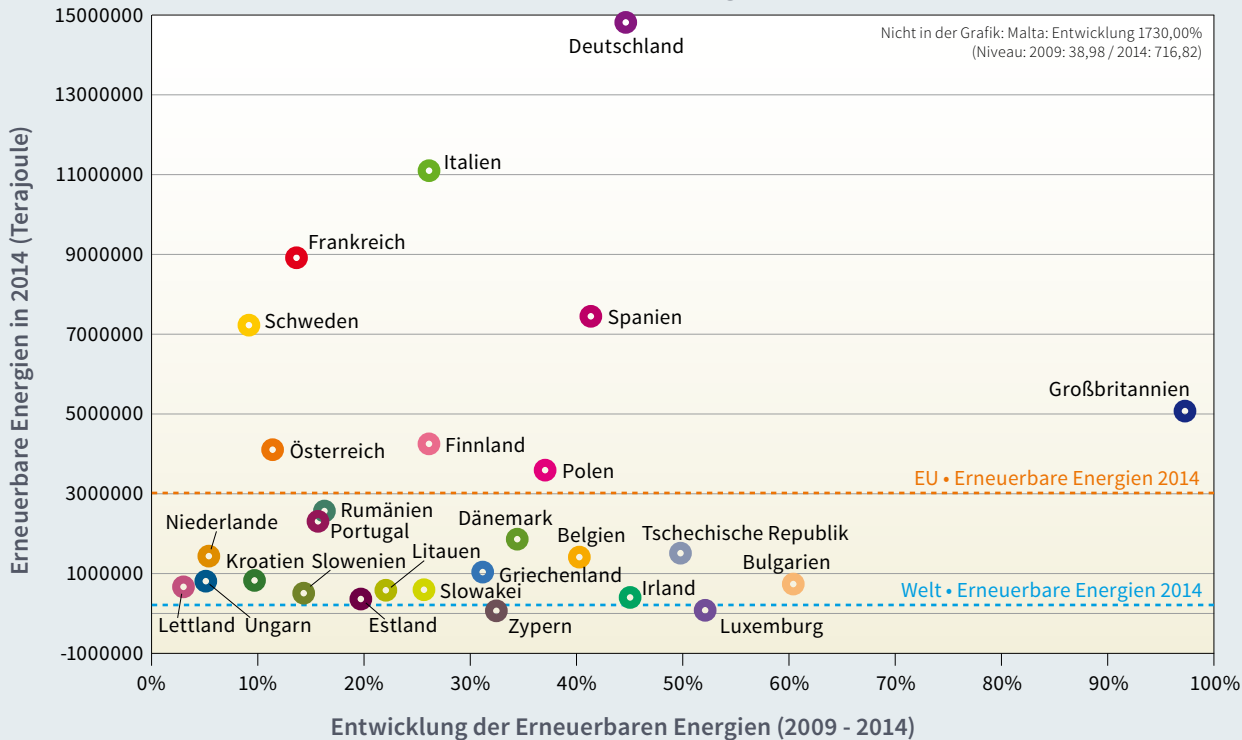


Europäische Union • CO₂ / PrimärenergieNiveau 2014 und Entwicklung 2009-2014



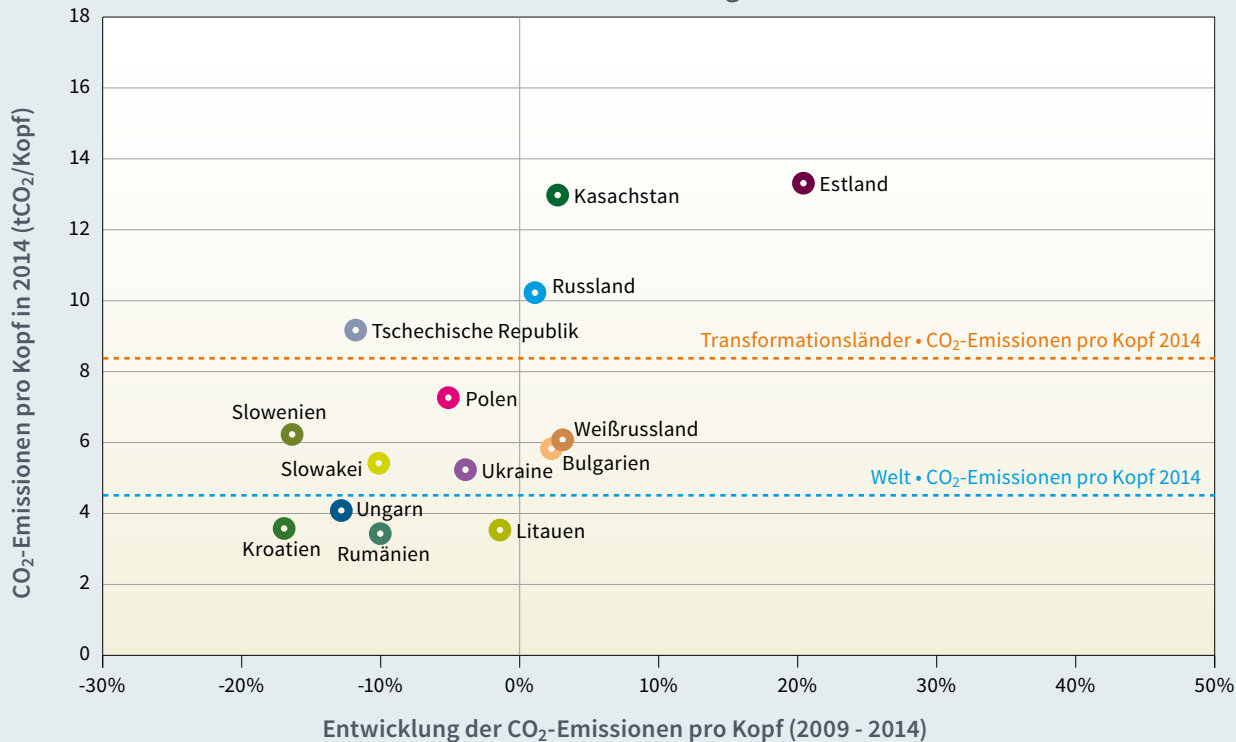
Europäische Union • Erneuerbare Energien

Niveau 2014 und Entwicklung 2009-2014



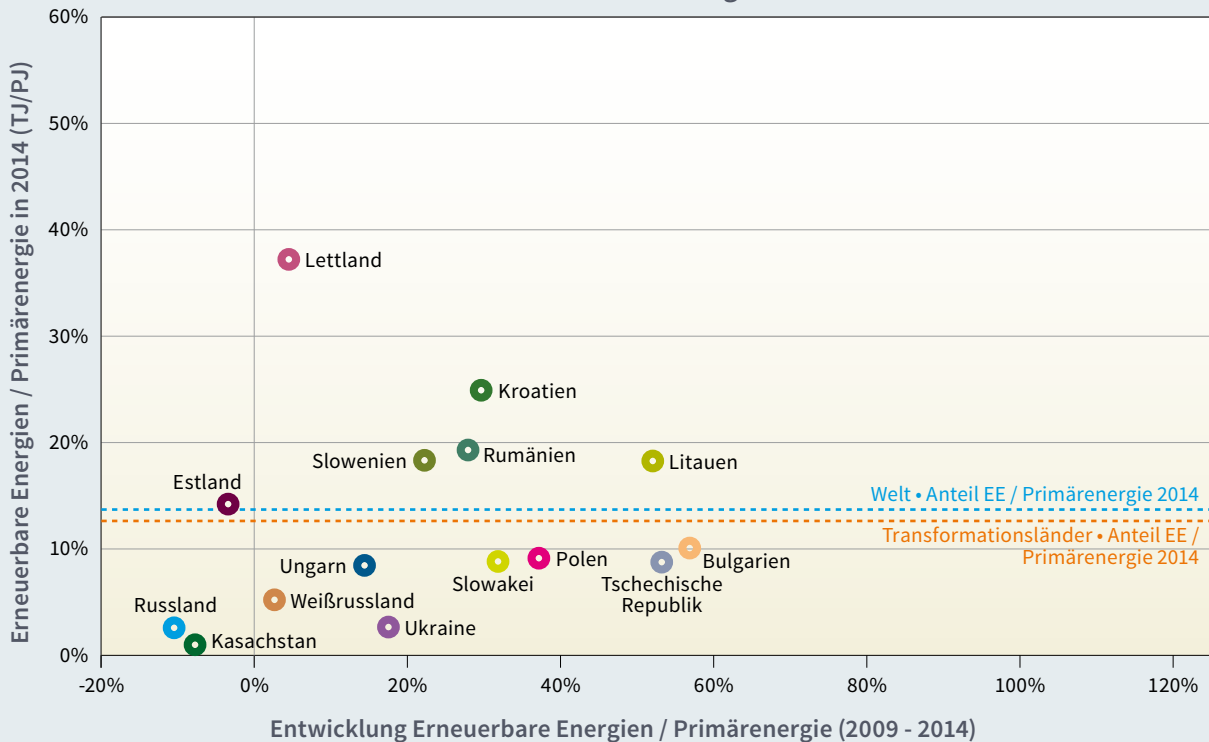
Transformationsländer • CO₂-Emissionen pro Kopf

Niveau 2014 und Entwicklung 2009-2014



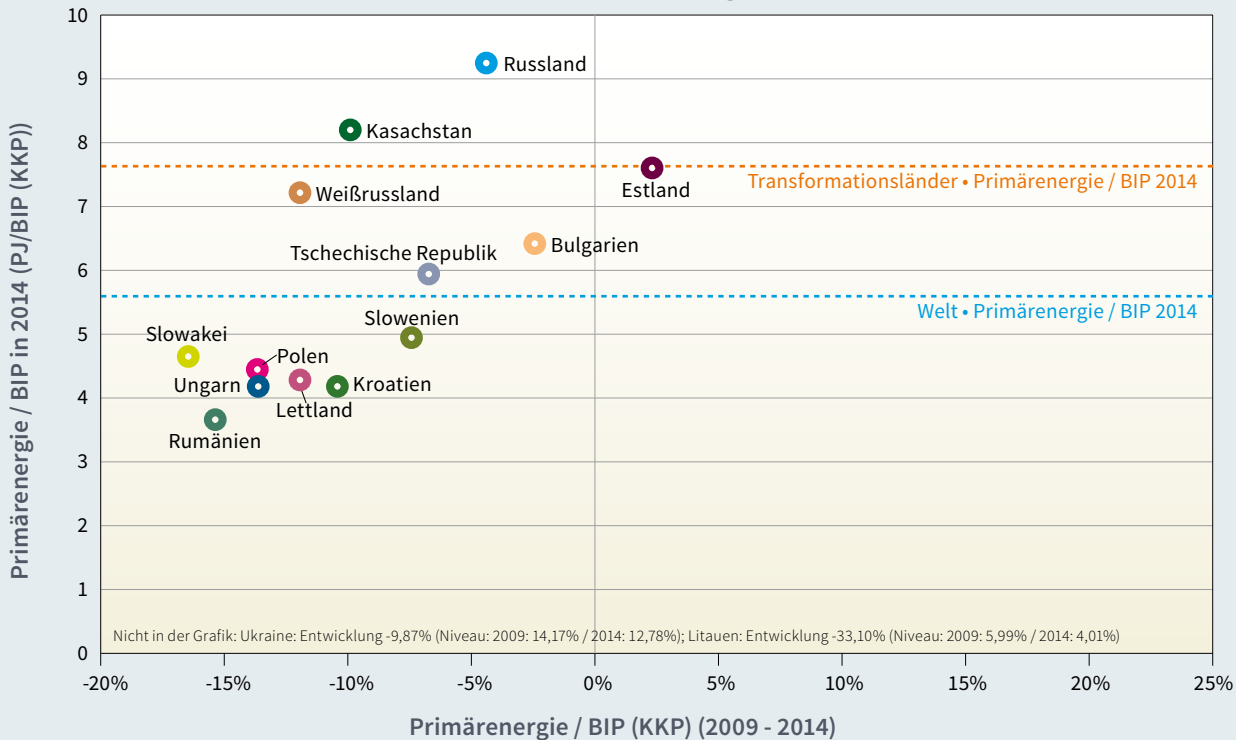
Transformationsländer • Erneuerbare Energien / Primärenergie

Niveau 2014 und Entwicklung 2009-2014



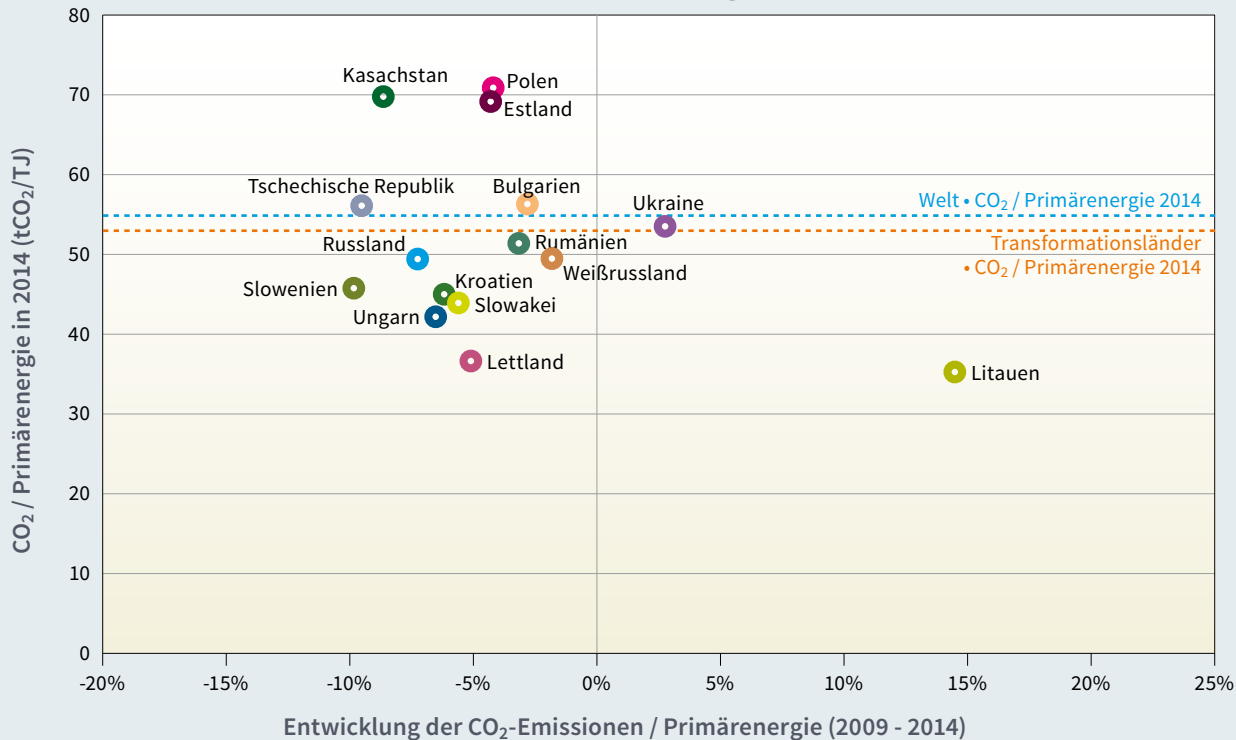
Transformationsländer • Primärenergie / BIP

Niveau 2014 und Entwicklung 2009-2014



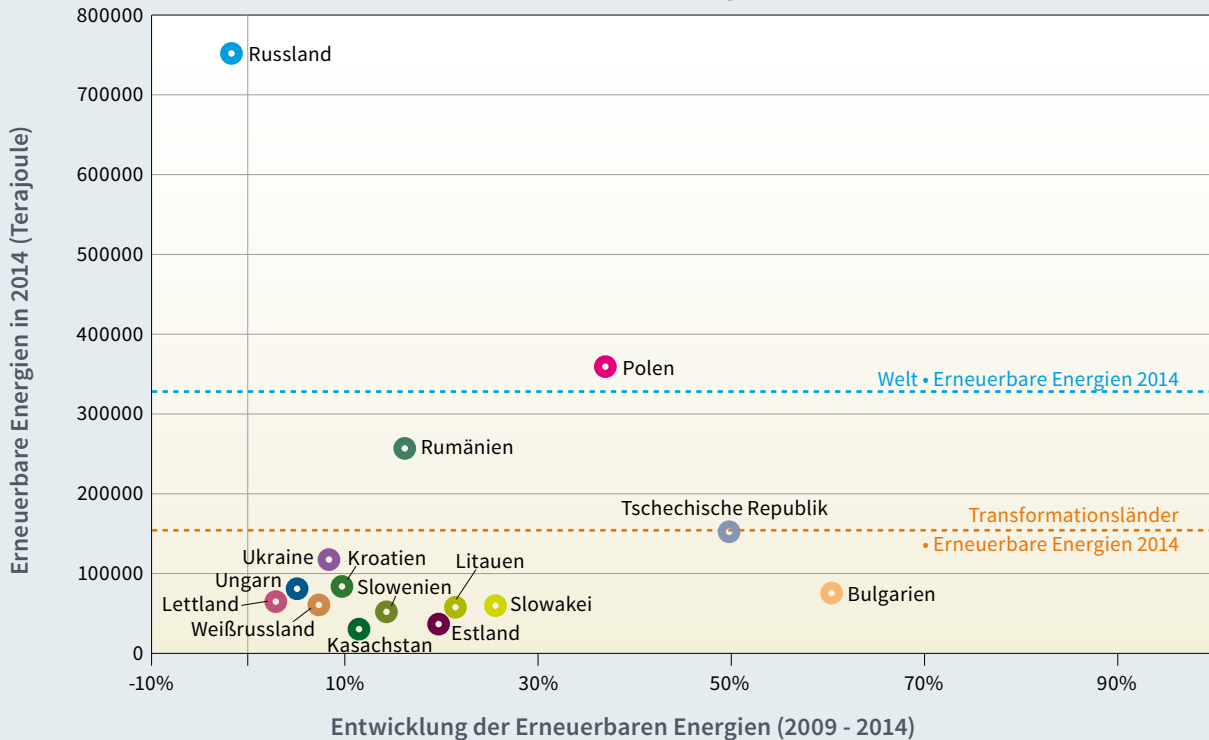
Transformationsländer • CO₂ / Primärenergie

Niveau 2014 und Entwicklung 2009-2014



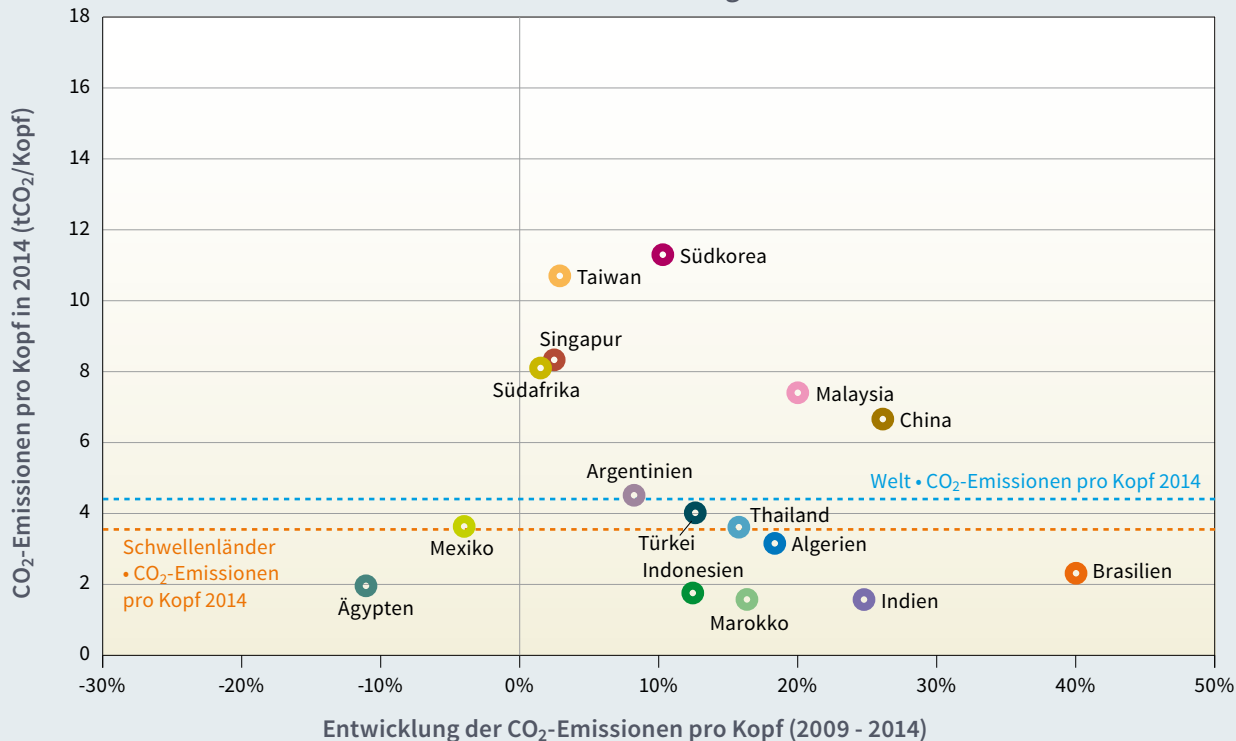
Transformationsländer • Erneuerbare Energien

Niveau 2014 und Entwicklung 2009-2014



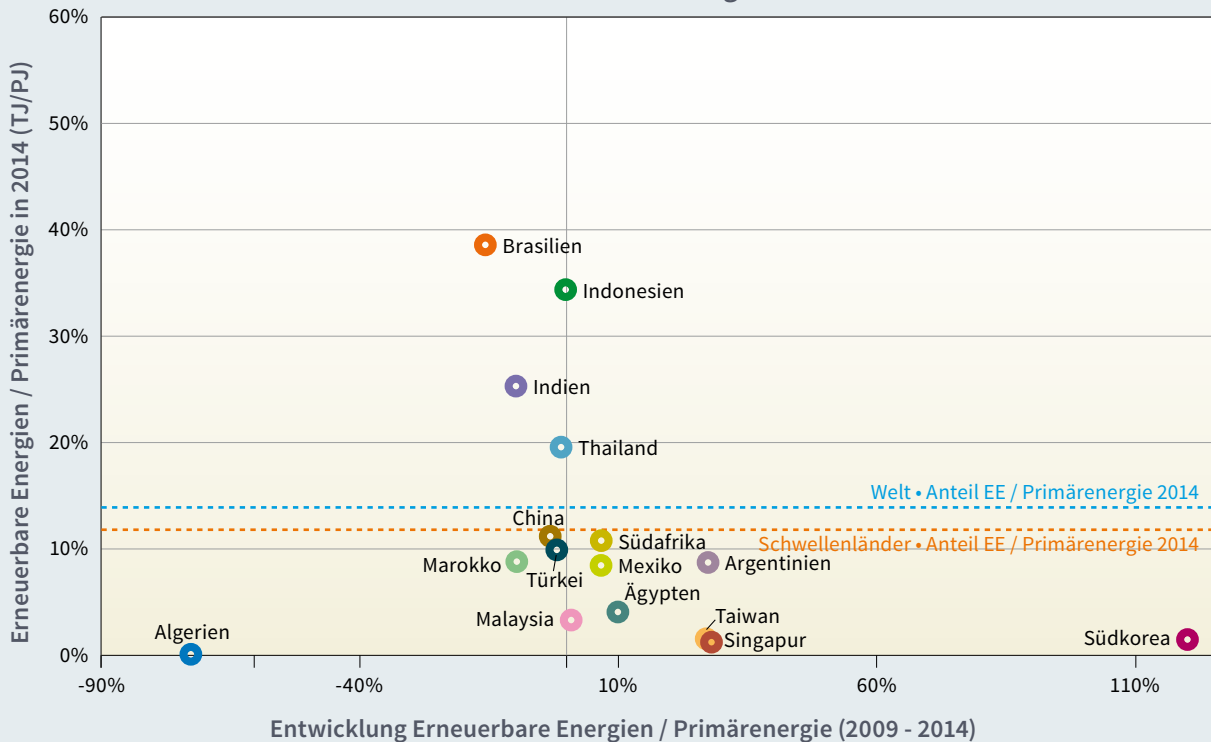
Schwellenländer • CO₂-Emissionen pro Kopf

Niveau 2014 und Entwicklung 2009-2014



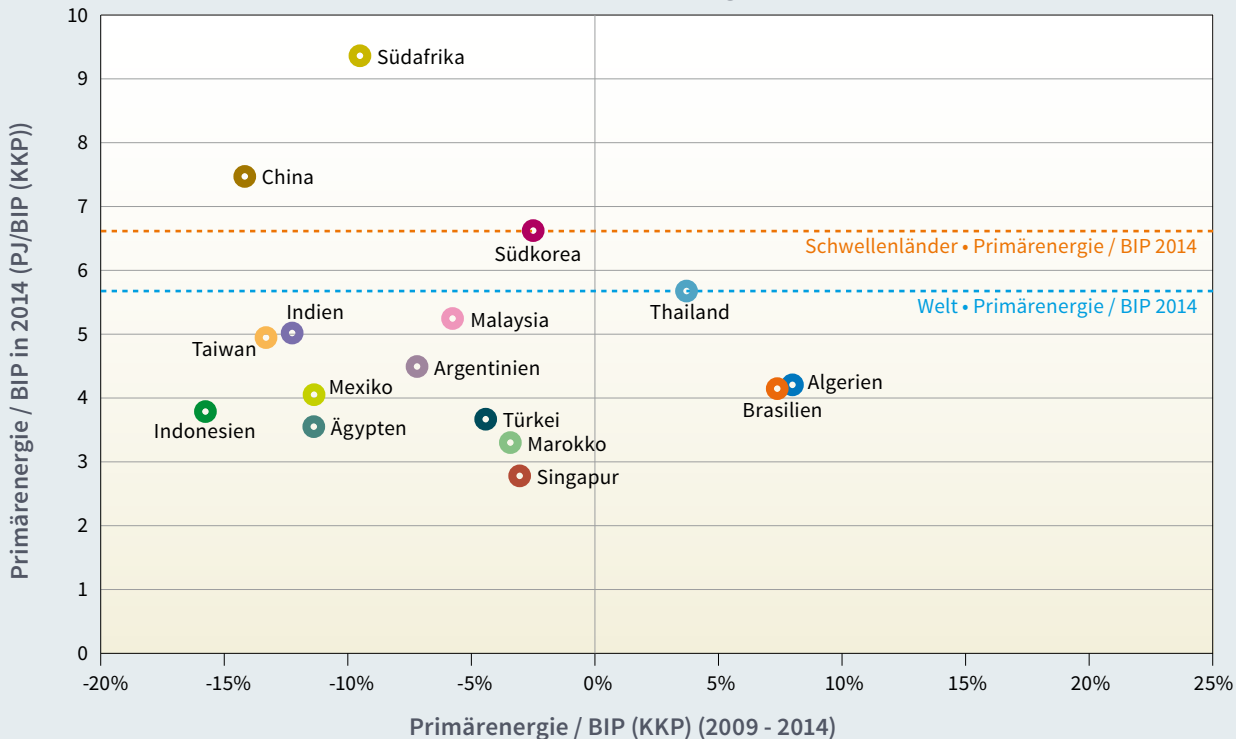
Schwellenländer • Erneuerbare Energien / Primärenergie

Niveau 2014 und Entwicklung 2009-2014



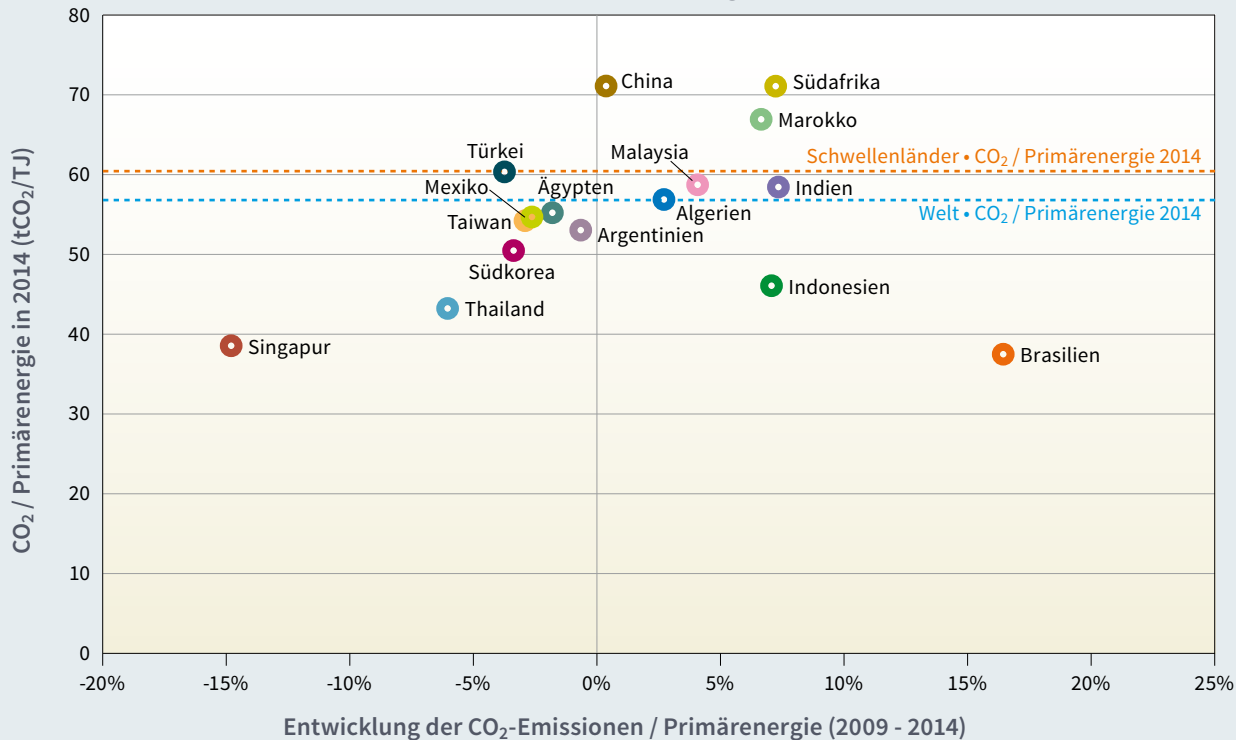
Schwellenländer • Primärenergie / BIP

Niveau 2014 und Entwicklung 2009-2014



Schwellenländer • CO₂ / Primärenergie

Niveau 2014 und Entwicklung 2009-2014



Schwellenländer • Erneuerbare Energien

Niveau 2014 und Entwicklung 2009-2014

